



Peak Close
Armitage

Peak Close Armitage

Lovett&Co. Estate Agents are pleased to offer TO LET this well presented two bedroom semi detached house set in a quiet cul-de-sac location.

The standout features of the property include: spacious lounge and kitchen-diner, rear conservatory, good sized bedrooms, front garden & private rear garden as well as a car port and driveway providing ample parking.

It is situated in the popular village of Armitage & Handsacre and enjoys a range of local village amenities whilst also benefiting from further facilities found within the nearby Cathedral City of Lichfield or Rugeley town centre. Commuter benefits include A5, A38 and the M6 toll Road linking the Midlands Motorway network and there are both Cross and Inter City railway lines available from Lichfield City.

The property has two floors; on the ground floor: reception hallway, lounge, kitchen and conservatory. On the first floor: two bedrooms and family bathroom. Externally the property offers: tarmac drive with parking for several vehicles, garage and rear gardens. The property benefits from UPVC double glazing and economy 7 central heating through out.

RECEPTION HALL:

KITCHEN:

8' 6" x 10' 6 (2.60m x 3.21m)

LOUNGE:

13' 8" x 12' 3 (4.17m x 3.74m)



CONSERVATORY:

FIRST FLOOR LANDING:

MASTER BEDROOM:

13' 8" x 9' 0 (4.17m x 2.75m)

BEDROOM TWO:

7' 3" x 10' 9 (2.20m x 3.28m)

FAMILY BATHROOM:

EXTERNALLY:

To the front is a tarmac drive with parking for several vehicles which leads to the car port via gated access. The private rear garden is enclosed by fenced borders with gated side access and features; block paved patio area ideal for entertaining leading to lawn with planted borders.

VIEWING:

Please contact us on 01543 889410 if you would like to arrange a viewing appointment for this property or require further information.

SORRY NO SMOKERS, DSS OR PETS

AVAILABLE IMMEDIATELY

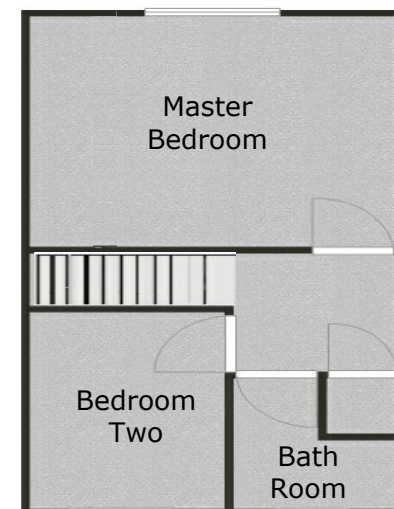
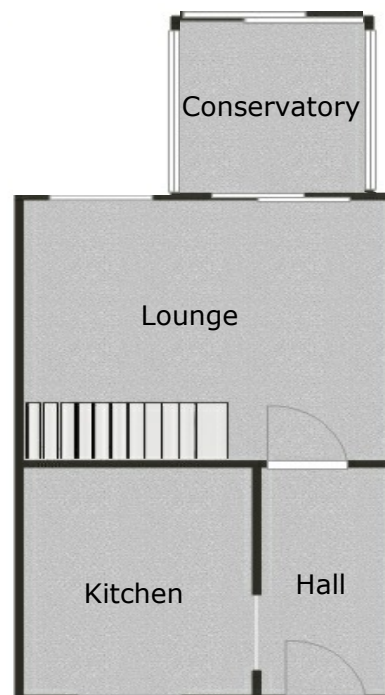




First Floor



Ground Floor



FOR ILLUSTRATIVE PURPOSES ONLY, NOT TO SCALE

