

Barrow Brook Close, Barrow, BB7 9UR

£160,000

STUNNING TWO BEDROOM APARTMENT IN THE HEART OF BARROW

Welcome to this delightful two-bedroom flat located on Barrow Brook Close in the charming area of Barrow. This purpose-built property, constructed in 2012, offers a generous living space of 678 square feet, making it an ideal choice for individuals or small families seeking comfort and convenience.

As you enter the flat, you will be greeted by a bright and airy open-plan lounge and kitchen area, perfect for both relaxation and entertaining. The modern kitchen is equipped with contemporary fittings, ensuring that cooking and dining experiences are both enjoyable and efficient. The spacious layout allows for a seamless flow between the living and dining spaces, creating an inviting atmosphere.

The two well-proportioned bedrooms provide ample space for rest and personalisation, making it easy to create your own sanctuary. The modern bathroom complements the overall aesthetic of the flat, featuring stylish fixtures and finishes.

Situated in a great location, this property benefits from excellent motorway links, making commuting a breeze. Additionally, a variety of local amenities are just a stone's throw away, ensuring that all your daily needs are easily met.

This flat is not only a comfortable home but also a fantastic opportunity for those looking to invest in a property that combines modern living with accessibility. Do not miss the chance to make this lovely flat your new home.

Energy Efficiency Rating		
	Current	Potential
Very energy efficient - lower running costs		
(92 plus) A		
(81-91) B		
(69-80) C		
(55-68) D		
(39-54) E		
(21-38) F		
(1-20) G		
Not energy efficient - higher running costs		
England & Wales	EU Directive 2002/91/EC	

These particulars, whilst believed to be accurate are set out as a general outline only for guidance and do not constitute any part of an offer or contract. Intending purchasers should not rely on them as statements of representation of fact, but must satisfy themselves by inspection or otherwise as to their accuracy. No person in this firm's employment has the authority to make or give any representation or warranty in respect of the property.

Barrow Brook Close, Barrow, BB7 9UR

£160,000



- Beautifully Presented First Floor Apartment
- Open Plan Living
- Communal Parking
- EPC Rating TBC
- Two Bedrooms
- Modern Fitted Kitchen
- Tenure Leasehold
- Three Piece Bathroom
- Perfect First Home
- Council Tax Band B

Ground Floor

Hall

10'6 x 8'5 (3.20m x 2.57m)

Hardwood entrance door, central heating radiator, intercom, storage, wood effect flooring and doors to bathroom, two bedrooms and open plan living.

Bathroom

7'5 x 6'3 (2.26m x 1.91m)

Heated towel rail, spotlights, dual flush W/C, wall mounted wash basin with mixer tap, panel bath with mixer tap and direct feed shower over, part panel elevation, tiled flooring and door to bedroom one.

Bedroom One

13'8 x 12'5 (4.17m x 3.78m)

UPVC double glazed window and central heating radiator,

Bedroom Two

9'6 x 8'7 (2.90m x 2.62m)

UPVC double glazed window and central heating radiator.

Open Plan Living

20'6 x 7'4 (6.25m x 2.24m)

Two UPVC double glazed windows, spotlights, TV point, base units, Corian worktops, tiled splash back, composite sink with draining board and high spout mixer tap, integrated oven and grill/microwave in high rise unit, induction hob, extractor fan, plumbing for washing machine, under unit lighting, part tile effect flooring, part vinyl flooring and French doors to Juliet balcony.

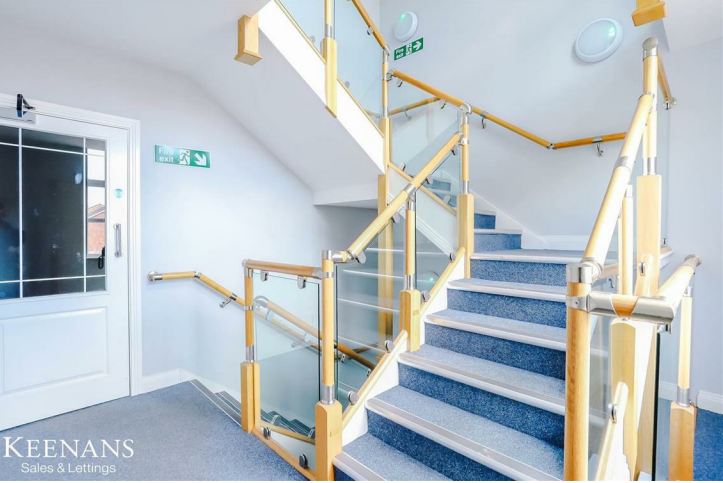
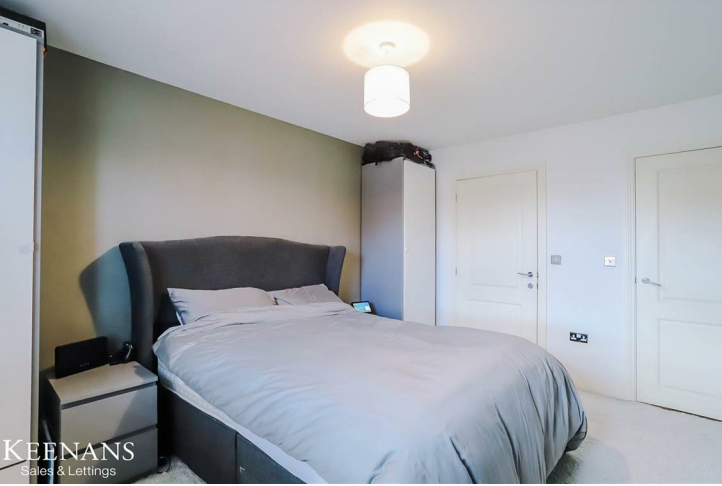
External

Rear

Communal parking.

Agents Notes

Lift and wheelchair accessible doors. Sky service for all residents.



Tel: 01200422824

www.keenans-estateagents.co.uk