



Carter & May

52 Rectory Road, Salisbury

Guide Price £399,950



# 52 Rectory Road

Salisbury, Salisbury

A generous size three bedroom detached bungalow situated in this desirable location. The accommodation includes a large conservatory, three good size bedrooms, a large 200ft garden and is offered to the market with no forward chain!

Council Tax band: E

Tenure: Freehold

## Entrance Hallway

Double glazed door leads into porch. Wooden door leads to hallway with stairs to First floor landing. Under stairs storage cupboard, night storage heater.

## Living Room

11' 11" x 11' 3" (3.64m x 3.43m)

Bay window to front aspect. A well proportioned room with Coal effect gas fireplace, dado rail and wall lights.

## Dining Room

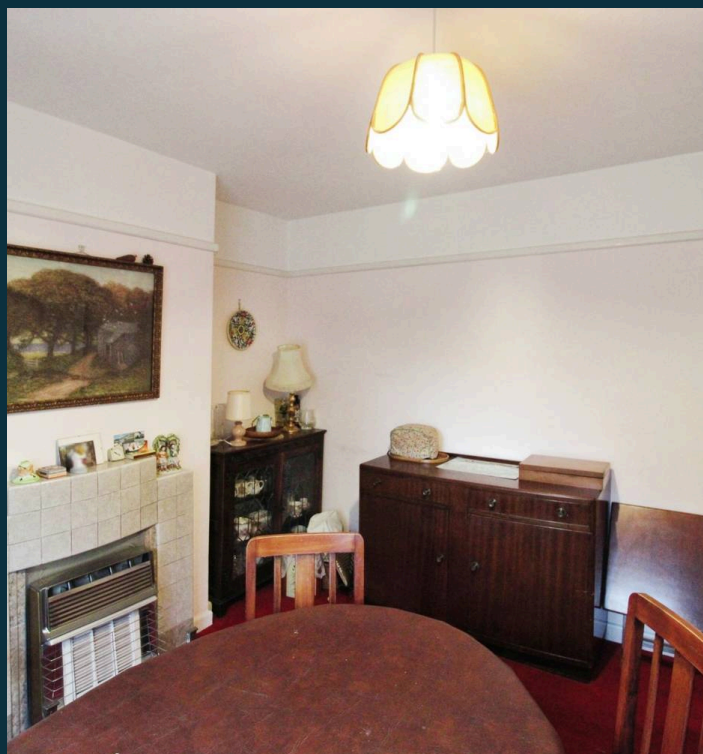
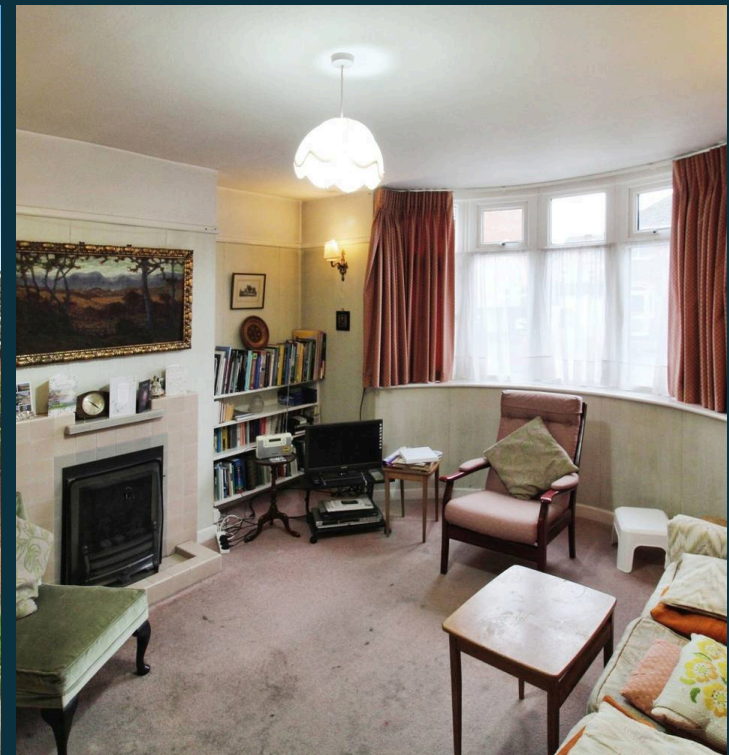
11' 11" x 11' 3" (3.64m x 3.43m)

A further generous size reception room with ample space for a dining table and chairs. Wooden door leads to the garden. Gas fireplace, picture rail. Night storage heater.

## Kitchen

8' 2" x 7' 5" (2.50m x 2.26m)

Wooden door to side aspect and window to rear aspect. Fitted kitchen comprising a matching range of wall and base units, work surfaces and plumbing and space for a washing machine, sink and drainer unit, space for an electric oven, under stairs cupboard. Wooden door to side leading to the garden.





### Landing

Stairs from hallway. Hatch to loft and doors to all rooms.

### Master Bedroom

11' 11" x 11' 6" (3.63m x 3.51m)

Double glazed bay window to front aspect. A generous size double room with built in cupboard. Picture rail. Electric heater.

### Bedroom Two

11' 11" x 11' 5" (3.62m x 3.48m)

Double glazed window to rear aspect. Electric heater. Built in airing cupboard. Picture rail.

### Bedroom Three

8' 5" x 8' 2" (2.56m x 2.50m)

Secondary glazed window to front aspect. Electric radiator.

### Bathroom

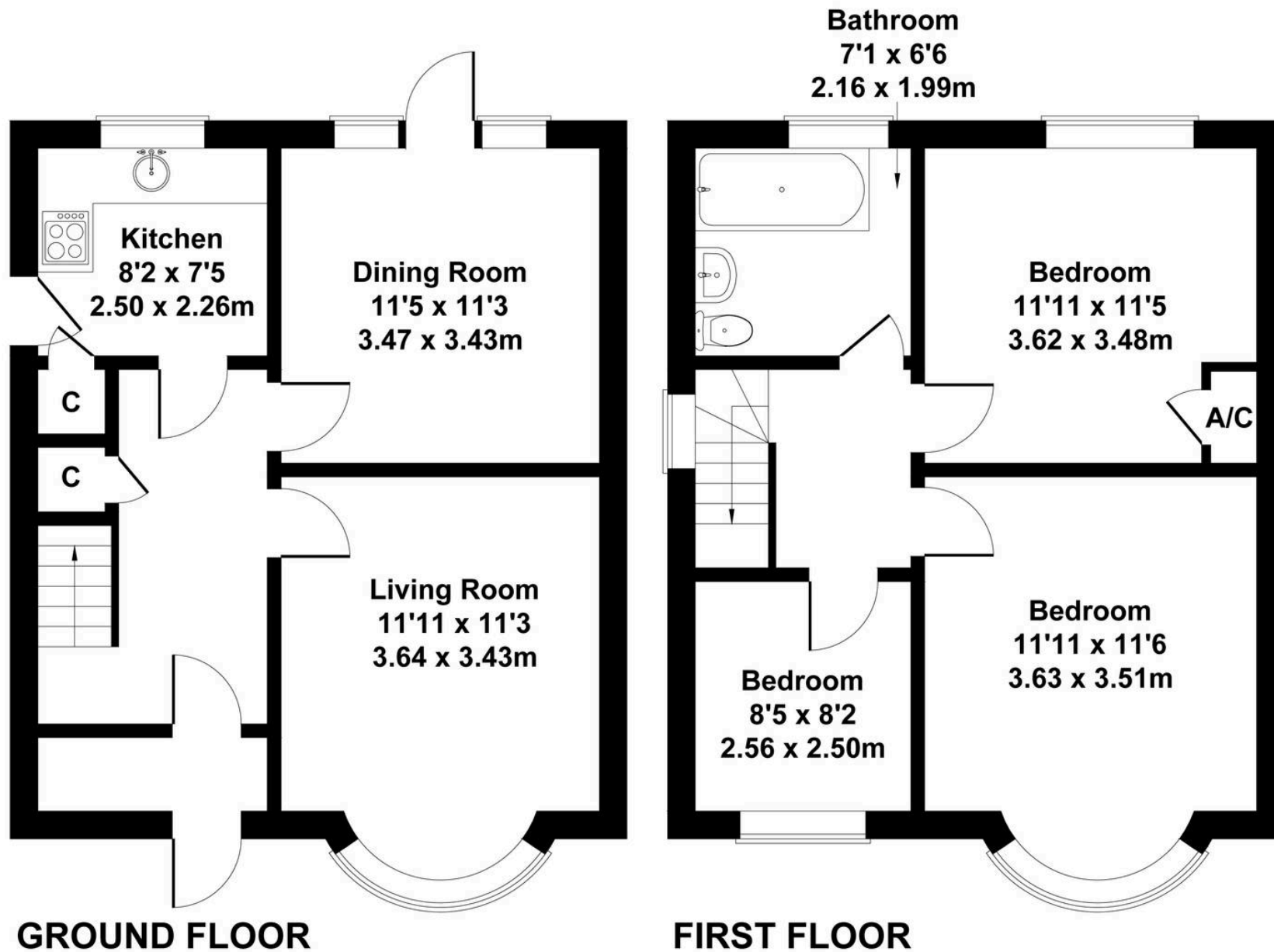
7' 1" x 6' 6" (2.16m x 1.99m)

Secondary glazed window to rear aspect. Suite comprising a panelled bath, pedestal wash hand basin, WC, vinyl flooring, coving. Tiling to walls.





Approximate Gross Internal Area  
980 sq ft - 91 sq m



Not to Scale. Produced by The Plan Portal 2024  
For Illustrative Purposes Only.