

8 Bishops Court, Bishopsteignton, TQ14 9RS

£132,000 Leasehold

Terraced Retirement Bungalow • For Those Aged 55+ • Highly Desirable Village Location • Light & Neutral Decor Throughout • Upgraded Electric Heating System • Living Room • One Double Bedroom With Patio Doors To Garden • Useful Store • Lovely Enclosed Rear Garden With Shed

Contact Us...

01626 815815

teignmouthsales@chamberlains.co

6 Wellington Street
Teignmouth
TQ14 8HH


chamberlains
the key to your home



Stepping in to the bungalow, you enter the bright and welcoming living room with wood flooring and neutral decor. A multi pane glazed door opens into the kitchen and from an inner lobby, doors lead to the bedroom, wet room and large storage cupboard with light, shelving, new water heater and hanging for coats.

The kitchen, with continuation of wooden floor, is newly fitted with white wall and base units, worktop and tiled splash back with a window overlooking the front. There is plumbing and space for a washing machine and space for a cooker and further appliances.

The double bedroom has built in wardrobes, wooden flooring and patio doors out to the garden.

The modern good sized wet room has a shower, wall hung wash hand basin, low level dual flush WC and heated towel rail.

The property is approached by a pathway with handrail with a small area of lawn and loose stone border housing potted plants. There is an extremely useful and secure store next to the front door.

The pretty rear garden has paving the width of the property large enough to accommodate garden furniture. A raised area laid to loose stone houses the garden shed with an area behind of established plants. The rear garden is fully enclosed with fence and hedge boundary.



Council Tax Band B - £1,740.84 per year

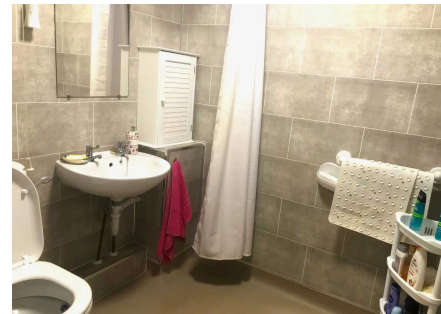
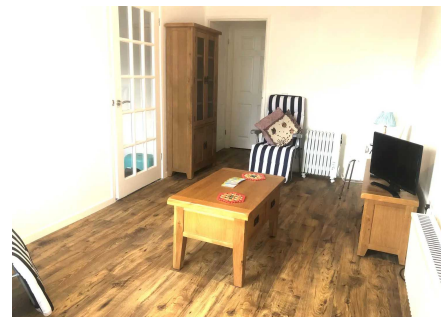
Tenure: Leasehold

New 99 year lease every time sold

Service Charge £200.67 per month
(Incl Ground Rent)



This retirement bungalow designed for those aged 55+, sits in a row of terraced retirement bungalows and has a pretty and very private rear garden. The property benefits from wooden flooring throughout, light and neutral decor and also enjoys an upgraded and modern German Fischer electric heating system. The bedroom has sliding patio doors to the garden and there is a modern wet room. Bishops Court is a popular location for those looking to enjoy their retirement and village life in this well established and popular retirement community.

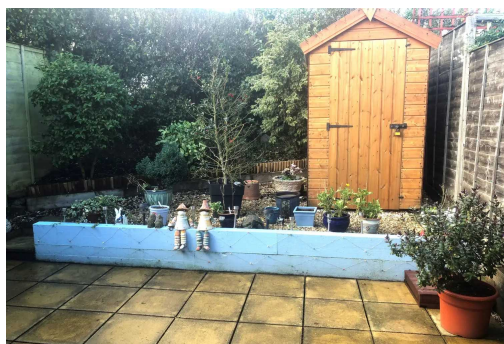


MEASUREMENTS:

Lounge/Diner 8' 10" x 14' 11" (2.69m x 4.54m),

Kitchen 5' 10" x 11' 9" (1.78m x 3.58m),

Bedroom 13' 5" x 8' 4" (4.08m x 2.54m)



Ground Floor
37.2 sq.m. (401 sq.ft.) approx.

