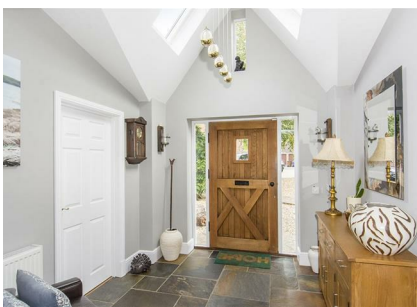


8 Glover Court, Middleton, LE16 8TQ



£675,000

Extended right across the front of the property to add a stunning vaulted ceiling reception hall, 25' lounge and an 18'5" dining/family room to its already impressive and spacious three storey accommodation, this property must be viewed in person to be appreciated. Further accommodation comprises inner hallway, 29' living/dining/kitchen, utility room and ground floor WC. To the first floor there is a master bedroom and master en-suite bathroom with four piece suite, two further bedrooms and family bathroom with five piece suite. To the second floor there are two further double bedrooms (five in total) with an additional bathroom. Outside there is a driveway leading to a double garage with a pleasant low maintenance enclosed rear garden. The property sits towards the upper end of a pleasant cul-de-sac in Middleton village, providing easy road links to both Market Harborough and Corby towns. There are direct train links to London from both towns and the village itself benefits from a range of local amenities. These include a well regarded school, a public house, village shop, village hall, recreation field and is adjacent to the ever popular East Carlton park.

Service without compromise

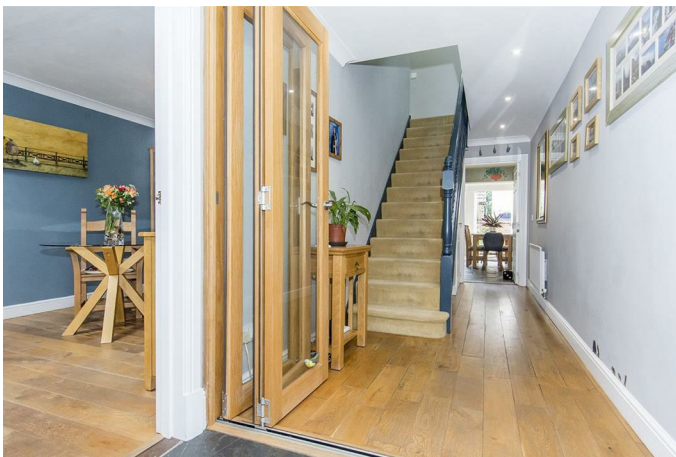
ADAMS & JONES

Reception Hallway 10'1" x 9'1" (3.07m x 2.77m)



Reclaimed solid timber front entrance door with double-glazed side lights. Vaulted ceiling with two double-glazed sky lights and double-glazed window to the apex. Slate flooring. Radiator. Timber framed bi-fold doors through to inner hallway.

Inner Hallway



Timber flooring. Radiator. Stairway to first floor.

Lounge 25'0" x 12'8" max / 9'6" min (7.62m x 3.86m max / 2.90m min)



Double-glazed window to front. Double-glazed skylight to front. Solid oak flooring. Log burning stove fire. Double doors through to kitchen/diner.



Service without compromise

Dining/Family Room 18'5" x 9'7" (5.61m x 2.92m)



Double-glazed window to front. Double-glazed skylight to front. Timber flooring. Built in cupboard. Radiator.



Living/Dining/Kitchen 29'0" x 10'4" max / 8'4" min
(8.84m x 3.15m max / 2.54m min)



Double-glazed window to rear. Double-glazed French doors to rear. Fitted with a range of wall and floor mounted kitchen units with roll edge work tops. Integrated fridge/freezer. Integrated dishwasher. Electric double oven. Gas hob with extractor hood over. Built in microwave. Ceramic one and a half bowl sink with mixer tap and drainer. Multi fuel burning stove fire. Slate flooring. Radiator. Vertical radiator. Opening through to extended dining area.

Extended Dining Area 10'1" x 6'0" (3.07m x 1.83m)



UPVC double-glazed French doors and windows arranged in a bay formation to the rear aspect. Slate flooring.



Utility Room 7'1" x 9'7" (2.16m x 2.92m)



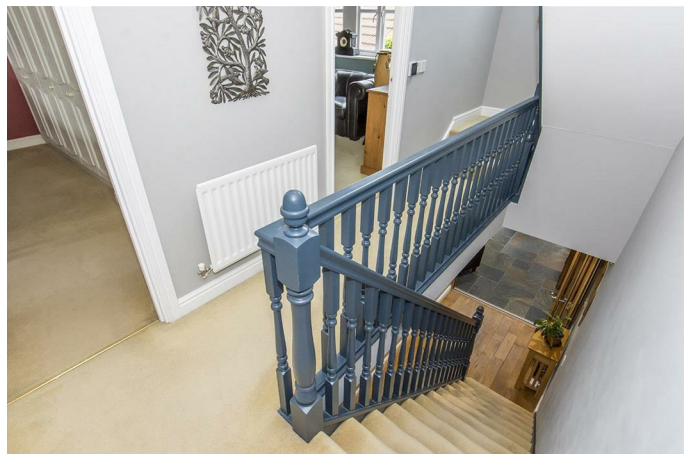
Double-glazed side entrance door. Fitted base units with roll edge work tops over. Space and plumbing for washing machine and fridge. Stainless steel sink with mixer tap and drainer. Central heating boiler cupboard. Radiator.

Ground Floor WC



WC. Wash hand basin. Tiled splash backs. Tiled flooring. Extractor fan. Radiator.

First Floor Landing



Double-glazed sky light to front. Radiator.

Master Bedroom 13'1" into wardrobe doors x 13'0"
(3.99m into wardrobe doors x 3.96m)



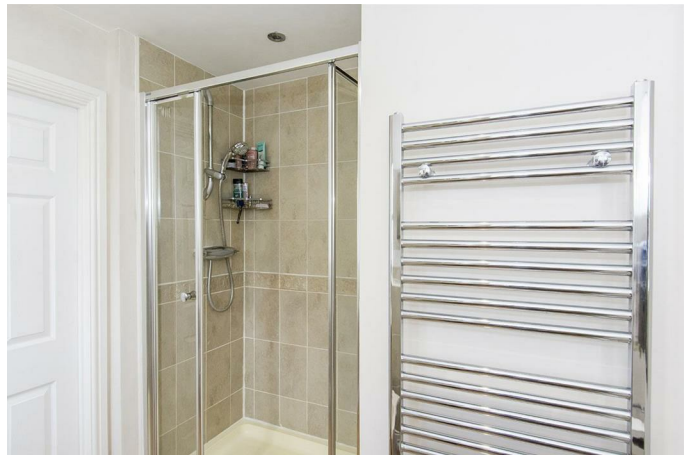
Double-glazed window to rear. Built in wardrobes. Radiator. Door through to en-suite.



Master En-Suite 7'5" max into shower x 7'0" (2.26m
max into shower x 2.13m)



Opaque double-glazed window to rear. Four piece suite comprising WC, wash hand basin, bidet and double width shower cubicle. Tiled splash backs. Heated towel rail. Shaver point.



Bedroom Two 15'2" x 9'9" (4.62m x 2.97m)



Double-glazed window to front. Radiator.

Bedroom Three 12'9" x 9'7" plus wardrobe depth (3.89m x 2.92m plus wardrobe depth)



Double-glazed window to front. Open wardrobe with hanging rail and cupboards over. Radiator.

Family Bathroom 9'2" plus shower recess x 7'5" max (2.79m plus shower recess x 2.26m max)



Opaque double-glazed window to front. Five piece suite comprising WC, bidet, wash hand basin, panelled bath and shower cubicle. Shaver point. Tiled splash backs. Large storage cupboard housing hot water tank.



Second Floor Landing



Double-glazed sky light to front.

Bedroom Four 12'9" x 12'0" (3.89m x 3.66m)



Double-glazed sky light to front and rear aspects.
Radiator.

Bedroom Five 12'7" x 9'9" (3.84m x 2.97m)



Double-glazed sky light to front and rear aspects.
Radiator.

Bathroom 7'6" x 5'9" (2.29m x 1.75m)



Opaque double-glazed window to rear. Three piece suite comprising WC, wash hand basin and panelled bath with shower mixer tap and glazed shower screen. Tiled splash backs.

Front



Gravelled front garden with paved pathway to front entrance door and side entrance gate. Triangular timber log store. Driveway providing private off road parking leading to the double garage.

Double Garage

Two up and over vehicle access doors.



Rear Garden



Various paved patio areas. Timber pergola. Timber decking. Timber shed. Enclosed partly by wall and partly by fencing.

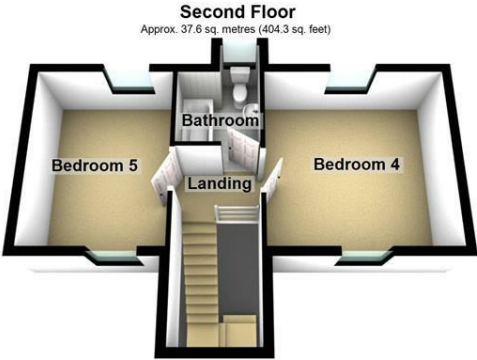
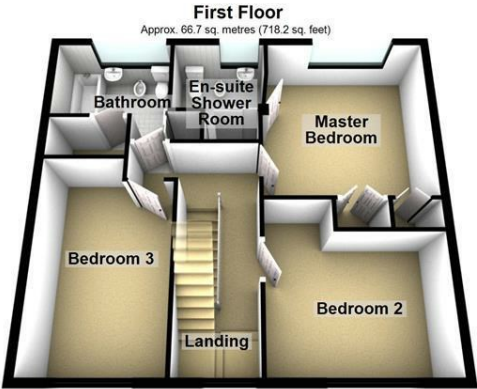
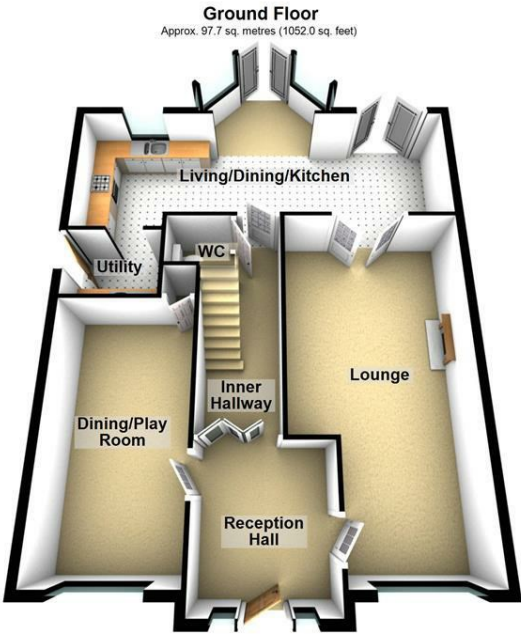


ADAMS
& JONES



Service without compromise

Floor Plan



Total area: approx. 202.0 sq. metres (2174.5 sq. feet)

Area Map



Energy Efficiency Graph

