

19 Deane Gate Drive, Houghton-On-The-Hill, LE7 9HA



£325,000

Located in the pleasant village of Houghton-On-The-Hill, providing easy access into the city of Leicester, is this attractive detached bungalow, being offered for sale through Adams & Jones with no upwards sale chain. Accommodation briefly comprises; entrance hallway, lounge open through to dining room, kitchen, two double bedrooms and bathroom. Outside the property benefits from a private driveway, single garage and a generous rear garden.

Service without compromise

Entrance Hallway



Opaque UPVC double-glazed front entrance door. Loft access hatch. Cloaks cupboard. Radiator.

Lounge 15'6" x 12'1" (4.72m x 3.68m)



UPVC double-glazed window to side. Gas fire to stone fire place. Radiator. Opening through to dining room.

(Lounge Photo Two)



Dining Room 11'9" x 11'4" (3.58m x 3.45m)



UPVC double-glazed window to side. UPVC double-glazed sliding patio doors to rear.

(Dining Room Photo Two)



Kitchen 15'7" max x 9'5" max (4.75m max x 2.87m max)



UPVC double-glazed window to rear. Opaque UPVC double-glazed side entrance door. Fitted with a range of wall and floor mounted units. Stainless steel one and a half bowl sink with mixer tap and drainer. High level double oven. Integrated fridge. Gas hob with extractor hood over. Space and plumbing for washing machine. Airing cupboard. Storage cupboard off with UPVC double-glazed window to side and Worcester wall mounted gas central heating boiler.

(Kitchen Photo Two)



(Kitchen Photo Three)



Bedroom One 12'8" x 10'9" (3.86m x 3.28m)



UPVC double-glazed bow window to front. Fitted wardrobes and drawer units. Radiator.

(Bedroom One Photo Two)



Bedroom Two 9'9" x 8'6" (2.97m x 2.59m)



UPVC double-glazed window to side. Fitted wardrobes. Radiator.

(Bedroom Two Photo Two)



Bathroom



Opaque UPVC double-glazed window to side. W/C and wash hand basin inset to storage units. Panelled bath with shower mixer tap. Heated towel rail.

(Bathroom Photo Two)



Front



Block paved private driveway.

Garage 16'0" x 8'7" max internal measurements (4.88m x 2.62m max internal measurements)

Up and over vehicle access door. Power connected. Single-glazed window to side.

Rear Garden



Of a generous size with paved patio. Range of plant beds and borders. Timber summerhouse. Greenhouse. Gated access through to an extra piece of land, formerly used as a vegetable patch.

(Rear Garden Photo Two)



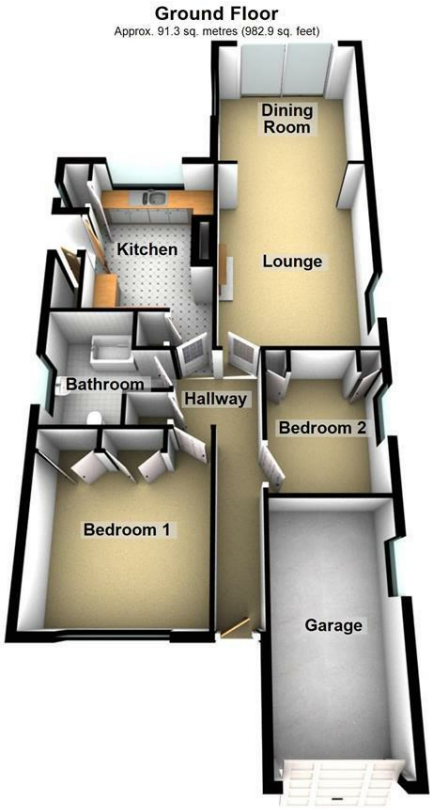
(Rear Garden Photo Three)



Rear Aspect

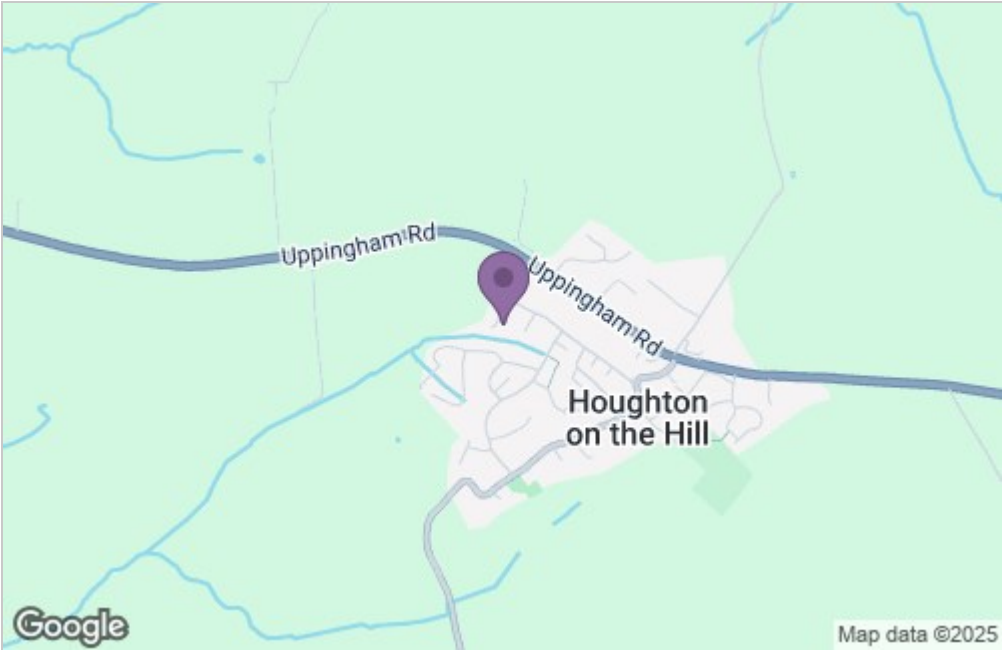


Floor Plan



Total area: approx. 91.3 sq. metres (982.9 sq. feet)

Area Map



Energy Efficiency Graph

