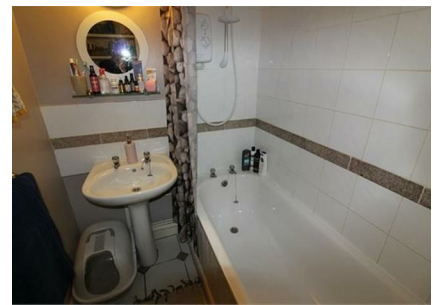


10 Hampton Court, Market Harborough, LE16 7DX



£700 Per Month

A perfect location for a regular commuter being five minutes walk from the station, this self contained apartment has been well maintained and decorated and will be available immediately. The accommodation is double glazed with electric heating, and comprises: Hall, open plan lounge and fitted kitchen, double bedroom and bathroom. There is also a single allocated parking space. Available second week of May

Service without compromise

Outer Hallway

From exterior staircase (recently replaced) with access to front doors to Flats 10 & 11 only.

Hall



Wood laminate flooring. Airing cupboard housing lagged hot water tank. Doors to rooms.

Open plan lounge and kitchen 17'2" x 9'10" (5.23m x 3.00m)



Two double glazed windows to the front aspect. Wood laminate flooring. Two wall lights. Television point. Slimline electric storage heater. Range of 'shaker' style fitted base and wall units. Roll edge work surfaces with complementary tiled splash backs. Fitted oven and four ring electric hob with filter extractor fan over. Stainless steel sink and drainer. Space and plumbing for automatic washing machine.

Bedroom 8'10" x 7'4" (2.69m x 2.24m)

Double glazed window to the front aspect. Slimline electric storage heater. Fitted clothes hanging rail.

Bathroom



Panelled bath with mains shower fitment over. Pedestal wash hand basin. Low level WC. Complementary tiling. Heated towel rail. Extractor fan.

Outside

There is a parking area accessed from Kettering Road and there is one allocated parking space. There is also an outside bin store and exterior staircase leading to the apartment.

Additional Information

Council tax band A

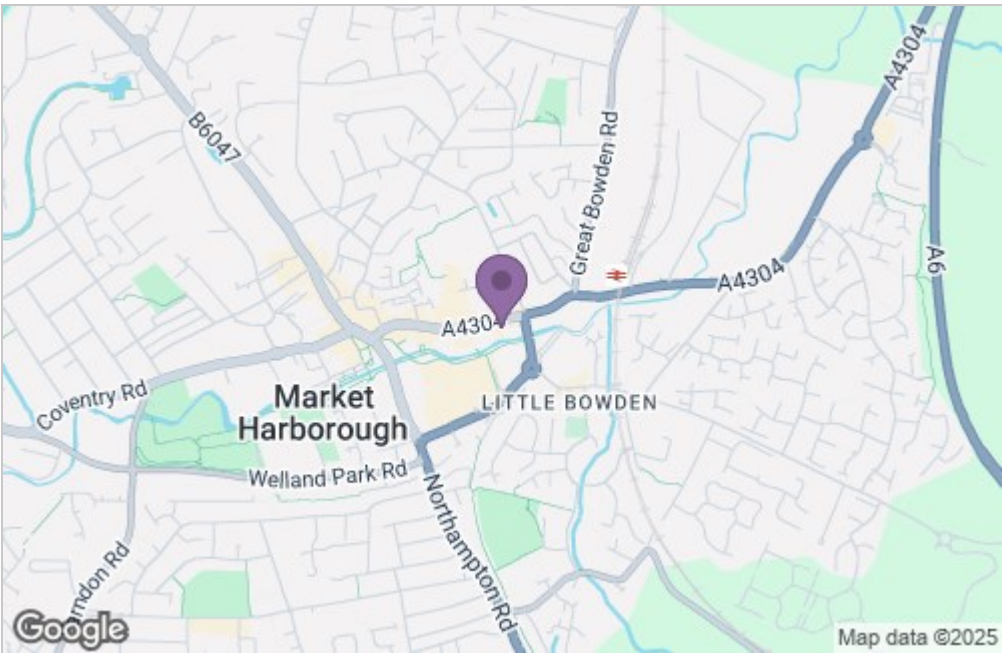
Holding deposit based on rent of £700pcm £161

Damage deposit based on rent of £700pcm £807

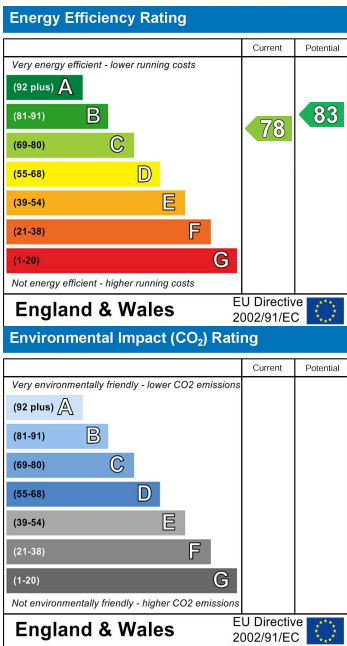
Initial tenancy term 6 months and will revert to a monthly periodic after the initial term

Floor Plan

Area Map



Energy Efficiency Graph



Service without compromise