

42 Douglas Bader Drive, Lutterworth, LE17 4GT



£1,450 Per Month

Situated in the sought-after area of Douglas Bader Drive, Lutterworth, this charming four-bedroom detached house offers a perfect blend of comfort and convenience. Upon entering, you are greeted by a welcoming entrance hall that leads to a spacious lounge, ideal for relaxation and family gatherings. The dining room provides an excellent space for entertaining, while the fitted kitchen is both functional and stylish, complete with a utility room and a cloakroom for added practicality. The first bedroom boasts fitted wardrobes and an en-suite shower room, ensuring a private retreat for the homeowners. The family bathroom, featuring a shower over the bath, caters to the needs of the entire household with ease. Outside, the garden is predominantly laid to lawn, providing a lovely area for children to play or for hosting summer barbecues. A patio area offers a perfect spot for outdoor dining, and a timber garden shed provides additional storage. The property also benefits from a single integral garage and ample off-road parking, making it a convenient choice for families or those with multiple vehicles. This delightful home is not only well-appointed but also situated in a popular location, making it an excellent opportunity for anyone looking to settle in Lutterworth. With its spacious layout and attractive outdoor space, this property is sure to appeal to a wide range of people.

Service without compromise

Entrance Hallway



Enter via a composite front door where you will find a radiator and the stairs rising to the first floor accommodation.

Hallway Photo Two



Lounge 12' x 15'2" (3.66m x 4.62m)



Bay window to the front aspect. Fireplace housing a coal effect gas fire. Laminate flooring. Two radiators.

Lounge Photo Two



Dining Room 9'8" x 8'8" (2.95m x 2.64m)



Door to garden and kitchen. Laminate flooring and a radiator.

Kitchen 11'5" (max) x 9'10" (3.48m (max) x 3.00m)



Fitted with a range of cabinets with complimenting surfaces. Porcelain sink unit with mixer taps. Built under oven Gas hob with extractor canopy. Dishwasher. Ceramic floor tiles. Radiator. Understairs cupboard. Window to the rear aspect.

Kitchen Photo Two



Kitchen Photo Three



Utility Room 8' x 5'4" (2.44m x 1.63m)



Fitted with cabinets with complimenting surfaces. Stainless steel sink with mixer taps. space for a washing machine. Ceramic floor tiles. The gas central heating boiler is mounted on the wall. Window to the side aspect and a door gives access to the outside.

Downstairs WC 5'3" x 5'3" (1.60m x 1.60m)



Fitted with a low level WC and wash hand set onto a vanity unit. Ceramic floor tiles. Radiator. Opaque window to the side aspect.

Landing



There is a airing cupboard and loft hatch access.

Bedroom One 15'7" x 12'2" (4.75m x 3.73m)



A double bedroom with fitted wardrobes and dressing table with drawers. Window to the front aspect. Radiator. A door to the en-suite.

Bedroom One Photo Two



Bedroom Two 10' x 7' 10" (3.05m x 2.13m 3.05m)



A double bedroom with a radiator and a window to the rear aspect.

En-Suite 5'6" x 5'1" (1.68m x 1.55m)



Fitted with a back to wall WC and wash hand basin set into a vanity unit. Corner shower cubicle. Heated towel rail. Ceramic wall & floor tiles. Opaque window to the front aspect.

Bedroom Three 12'4" x 8'10" (3.76m x 2.69m)



A double bedroom with a built-in storage cupboard. Window to the front aspect and a radiator.

Bedroom Three Photo Two



Family Bathroom 6'9" x 6'10" (2.06m x 2.08m)



Bedroom Four 10' x 9'9" (3.05m x 2.97m)



A double bedroom with a built-in storage cupboard. Window to the rear aspect and a radiator.

Fitted with a back to wall WC and wash hand basin set into a vanity unit. Bath with shower & side screen. Heated towel rail. Ceramic wall & floor tiles. Opaque window to the rear aspect.

Garden



The garden is mainly laid to lawn with a paved patio and a timber garden shed. Gated side access and an outside tap.



Garden Photo Two



Garage & Parking

The integral garage has an up and over door. Power & light connected. the drive provides off road parking.

Additional Information

Council tax band E

Holding deposit based on £1450 rent per calendar month amounting to £334

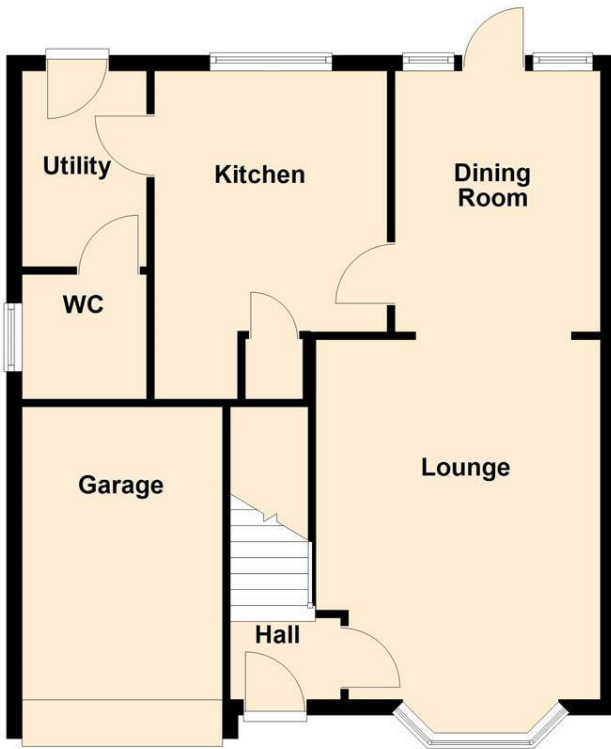
Damage deposit based on £1450 rent per calendar month amounting to £1673

Initial tenancy term 6 months and will revert to a monthly periodic after the initial term

Floor Plan

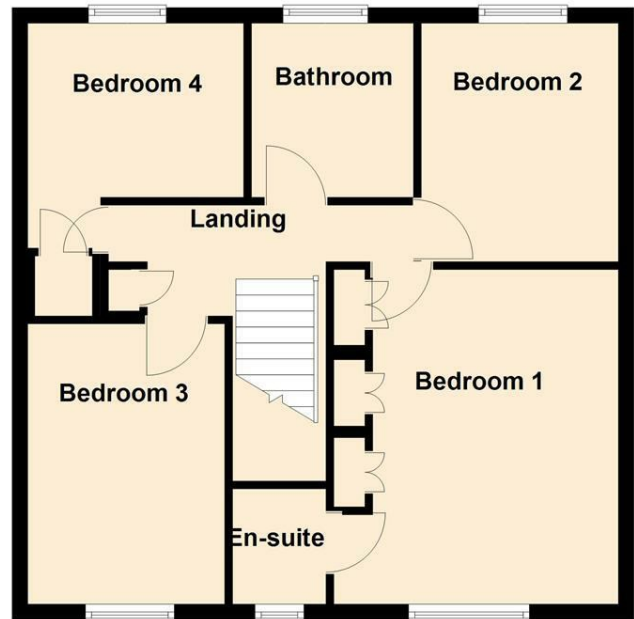
Ground Floor

Approx. 60.0 sq. metres (645.5 sq. feet)



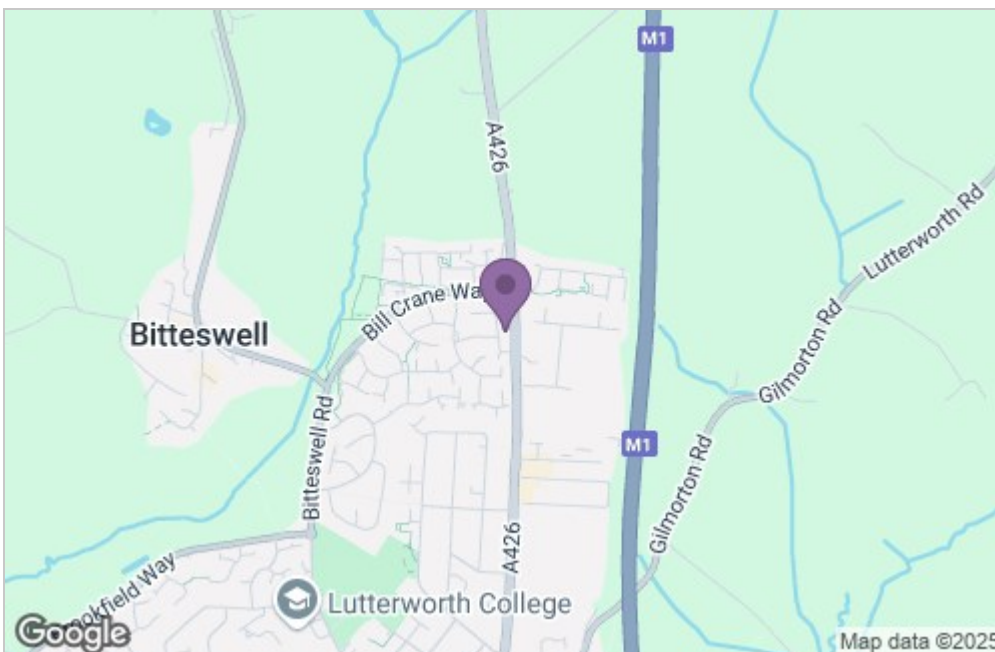
First Floor

Approx. 58.0 sq. metres (624.4 sq. feet)

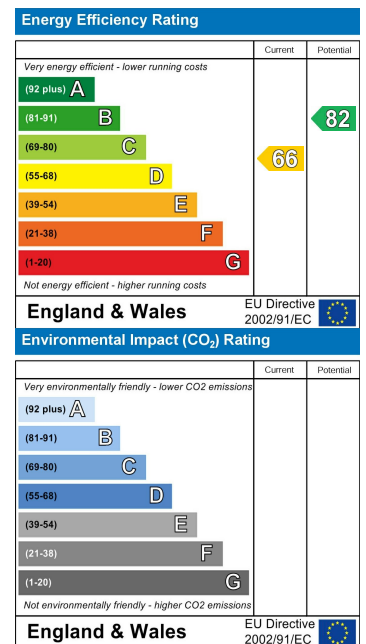


Total area: approx. 118.0 sq. metres (1270.0 sq. feet)

Area Map



Energy Efficiency Graph



Service without compromise