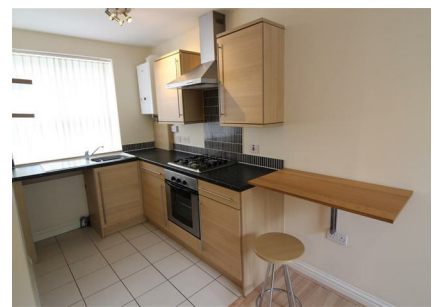


Flat 1 | 111 St Mary's Road, Market Harborough, LE16



£725 Per Month

Ideally located for access to the town centre and railway station is this well presented and self contained ground floor apartment. The gas centrally heated and double glazed accommodation comprises: Lounge with built in cloaks cupboards, open plan fitted kitchen with appliances, double bedroom with fitted wardrobes, and shower room. There is also allocated off road parking. The property is unfurnished and available early September

Service without compromise

Living / Dining Room 16'11" x 12'9" (5.18 x 3.89)



Double-glazed window to rear. Main entrance door from car park to rear. Cloaks cupboard. Alarm control panel. Radiator.

Kitchen 8'2" x 6'0" (2.49 x 1.85)



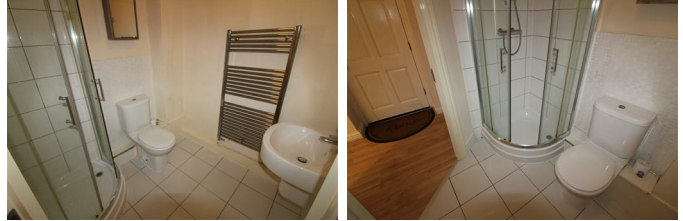
Range of wall and floor mounted kitchen units with roll edge worktops. Stainless steel sink with mixer tap and drainer. Electric oven. Gas hob. Extractor hood. Space and plumbing for washing machine. Space for fridge/freezer. Tiled splash-backs. Double-glazed window to front.

Bedroom 10'7" x 7'6" (3.23 x 2.29)



Double-glazed window to front. Built-in wardrobes. Radiator.

Shower Room



Three piece white suite comprising low-flush WC, wash hand basin and shower cubicle. Heated towel rail. Tiled splash-backs. Tiled flooring. Extractor fan.

Outside / Rear of Block

Communal car park with one allocated parking space directly behind the apartment.

Additional Information

Council tax band A

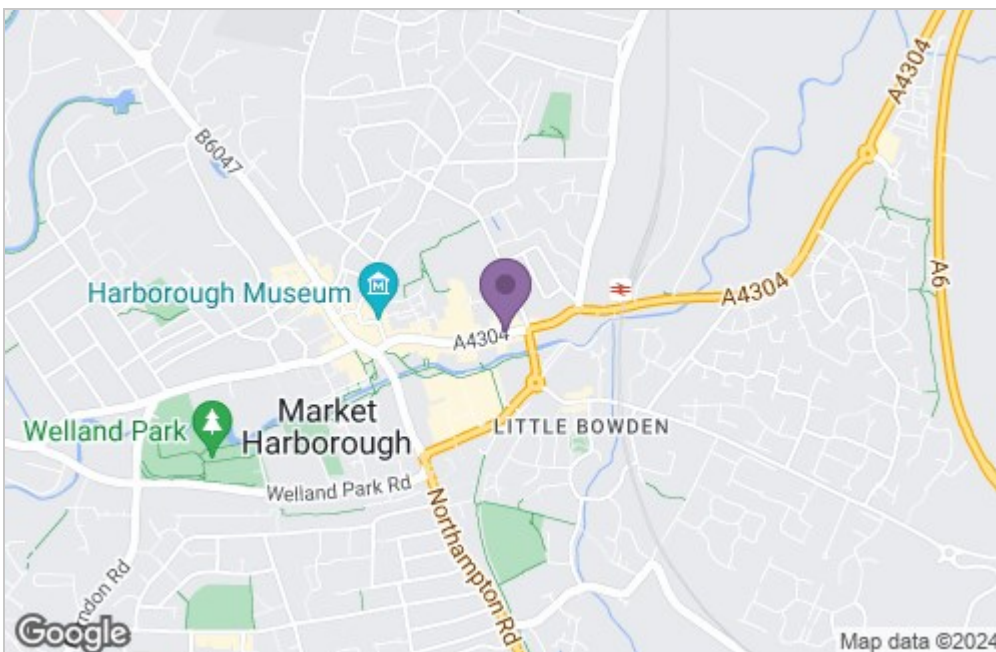
Deposit based on rent of £725pcm is £836.00

Holding deposit £167 ie one weeks rent equivalent

Initial tenancy term 6 months and will revert to a monthly periodic after the initial term

Floor Plan

Area Map



Energy Efficiency Graph

