



## 12 Elizabeth Place

Trimbush Way, Market Harborough, LE16 7YH

£194,995

Constructed to a high specification by award winning builders McCarthy & Stone, and restricted to 'Over 70's' only, is this beautifully presented one bedroom ground floor apartment with private patio. The complex is well located towards the Eastern outskirts of town and offers tailored domestic support packages, a superb social lounge/bistro and guest suite. There is also car parking available, if required. Please call Adams & Jones today for further information.

- Brand New One Bedroom Retirement Apartment
- Generous Room Proportions
- Superb In House Facilities
- Close Proximity To Town & Amenities
- One Large Double Bedroom
- Modern Wet Room
- Private Patio & Communal Gardens
- Parking Space Available By Separate Negotiation
- NO CHAIN!

### Viewing

Please contact our Market Harborough Sales Office on 01858 461888 or our Lutterworth office on 01455 888670 if you wish to arrange a viewing appointment for this property or require further information.



1



1



1



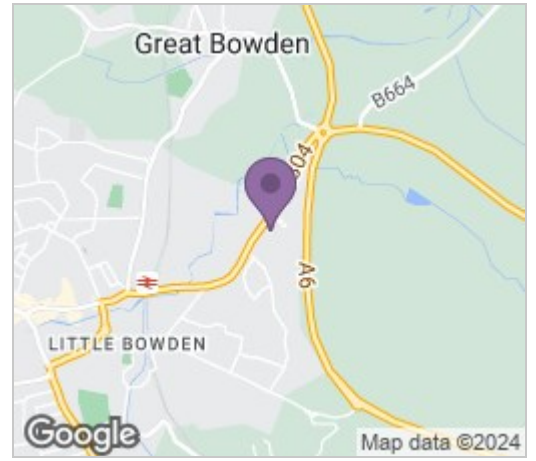
B



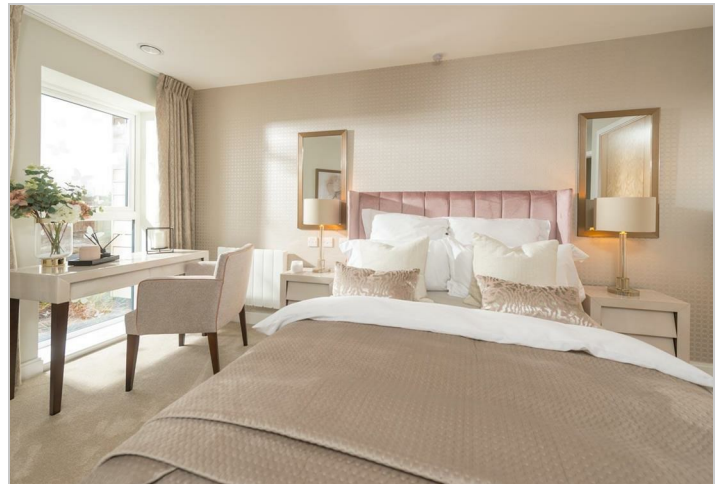
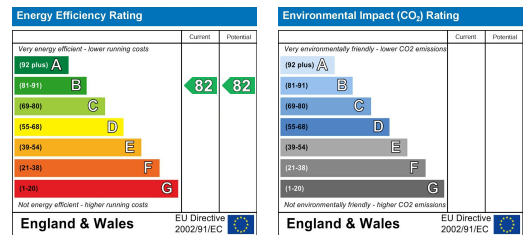
## Floor Plan



## Area Map



## Energy Efficiency Graph



These particulars, whilst believed to be accurate are set out as a general outline only for guidance and do not constitute any part of an offer or contract. Intending purchasers should not rely on them as statements of representation of fact, but must satisfy themselves by inspection or otherwise as to their accuracy. No person in this firm's employment has the authority to make or give any representation or warranty in respect of the property.