



39 RHODFA GROES WEN

CARDIFF CF5 2DD

£244,000



APARTMENT



2



2



2



1

**\*\* MODERN TWO BEDROOM SECOND FLOOR APARTMENT \*\* PARKING SPACE \*\***

A beautifully presented two bedroom top floor apartment in a modern and select development built by Redrow in 2023.

Communal telephone intercom to apartments, communal entrance hallway, top floor apartment entrance hallway with large storage cupboard, large kitchen/lounge/diner with french doors to Juliet balcony, two good sized bedrooms, primary bedroom with ensuite shower room and a separate modern family bathroom with shower over bath. Gas central heating. Parking space. EPC Rating: B

**LOCATION**

The property is set within Cardiff's prestigious Plasdwr development and is very well placed in terms of local amenities, which include food stores, post office, cafes, bars and restaurants, doctor and dental surgeries, pharmacies, hair salons and churches. There is also a sports and leisure centre (with 25m swimming pool) nearby, plus thriving golf and tennis clubs. The area is served by several day nurseries, plus a range of excellent Primary and Secondary Schools. Being conveniently placed for transport links, commuters will benefit from easy access to Cardiff City Centre & the M4 Motorway.

**GROUND FLOOR**

Communal entrance video intercom, communal entrance door. Staircases to all floors.

**SECOND FLOOR**

**ENTRANCE HALLWAY**

Approached via a panelled entrance door leading to the spacious hallway. Large double storage cupboard. Video intercom to main entrance.

**KITCHEN/LOUNGE/DINER**

22' 0" x 13' 1" (6.71m x 4.00m)

Kitchen well appointed along two sides in matte finish fronts beneath laminate worktop surfaces. Inset 1.5 bowl stainless steel sink with side drainer. Inset four ring induction hob with curved glass cooker hood above. Integrated oven and grill. Integrated fridge & freezer. Integrated dishwasher. Matching range of eye level wall cupboards. Cupboard housing the 'Ideal Logic' combi gas central heating boiler. Ample space for family seating and dining. French doors opening to the glass panelled Juliet balcony overlooking the lawn and pathways. Quality 'Amtico' flooring. Radiator.

**TENURE: LEASEHOLD**

**COUNCIL TAX BAND: C**

**FLOOR AREA APPROX: 735 SQ.FT.**

**VIEWING: STRICTLY BY APPOINTMENT**

**BEDROOM ONE**

11' 3" x 10' 9" (3.44m x 3.30m)

With two windows overlooking the lawn, a good sized primary bedroom. 'Amtico' flooring. Radiator. Door to ensuite.

**ENSUITE SHOWER ROOM**

7' 2" x 4' 9" (2.19m x 1.46m)

Modern white suite comprising low level wc, wash hand basin, large shower cubicle with chrome shower above. Wall tiling to splash back areas. Electric shaver point. Extractor fan. Chrome heated towel rail.

**BEDROOM TWO**

10' 10" x 9' 10" (3.31m x 3.00m)

Aspect to front, a good sized second bedroom. Radiator.

**FAMILY BATHROOM**

7' 6" x 6' 6" (2.30m x 2.00m)

Quality white suite comprising low level wc, wash hand basin, panelled bath with chrome shower above and swivel shower screen. Wall tiling to splash back areas. Electric shaver point. Extractor fan. Chrome heated towel rail.

**OUTSIDE**

**PARKING**

One allocated parking space.

**ADDITIONAL INFORMATION**

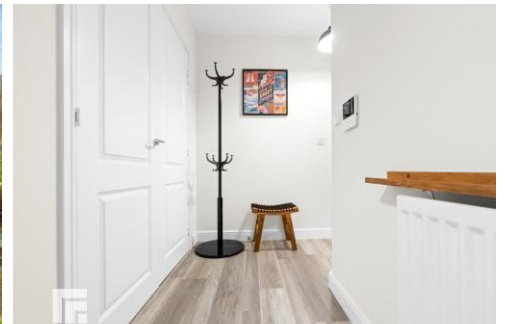
Lease 998 Years remaining

Service Charges is estimated £1088 per annum





# 39 RHODFA GROES WEN, CARDIFF, CF5 2DD



# 39 RHODFA GROES WEN, CARDIFF, CF5 2DD

SECOND FLOOR  
735 sq.ft. (68.3 sq.m.) approx.



TOTAL FLOOR AREA: 735 sq.ft. (68.3 sq.m.) approx.  
Whilst every attempt has been made to ensure the accuracy of the floorplan contained here, measurements of doors, windows, rooms and any other items are approximate and no responsibility is taken for any error, omission or mis-statement. This plan is for illustrative purposes only and should be used as such by any prospective purchaser. The services, systems and appliances shown have not been tested and no guarantee as to their operability or efficiency can be given.  
Made with Metropix ©2025

Score	Energy rating	Current	Potential
92+	A		
81-91	B	84 B	84 B
69-80	C		
55-68	D		
39-54	E		
21-38	F		
1-20	G		

**RADYR** 029 2084 2124  
Radyr, 6 Station Road, Radyr, Cardiff, South  
Glamorgan, CF15 8AA



**Important Notice:** These particulars are prepared for guidance only and do not form whole or any part of any offer or contract. Whilst the particulars are given in good faith, they are not to be relied upon as being a statement or representation of fact. They are made without responsibility on the part of MGY Ltd or Vendor/lessor and the prospective purchaser/lessee should satisfy themselves by inspection or other wise as to their accuracy. Neither MGY Ltd nor anyone in their employ, or the vendor/lessor, imply, make or give any representation/warranty whatsoever in relation to this property.

**MGY.CO.UK**