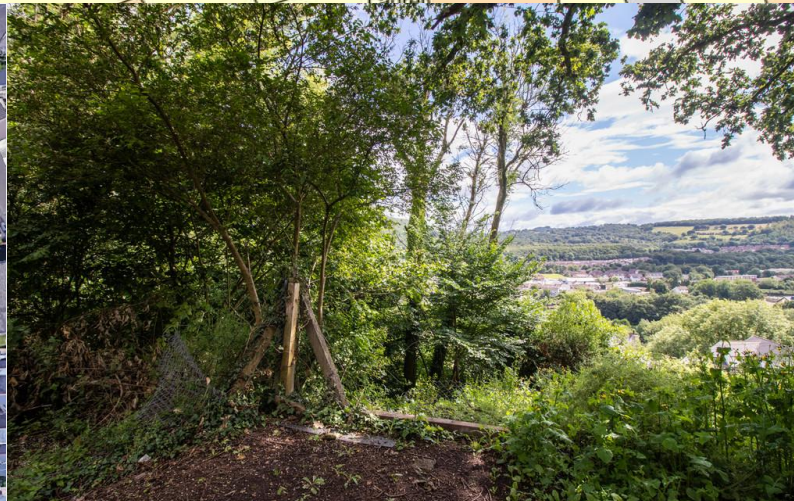
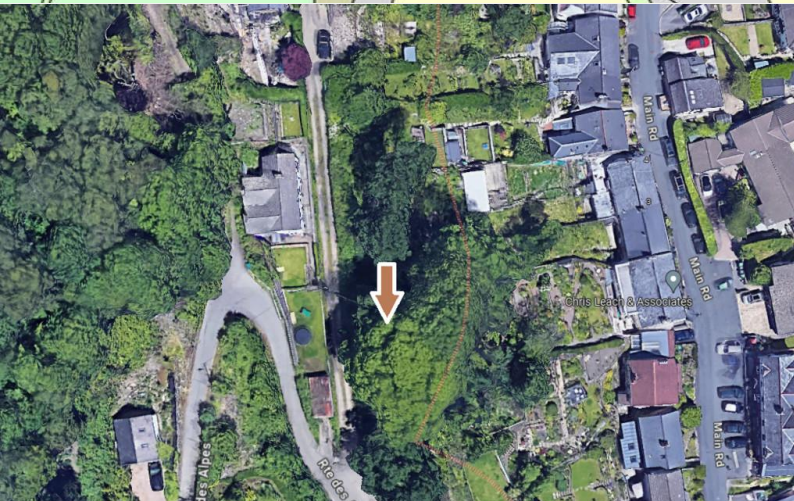
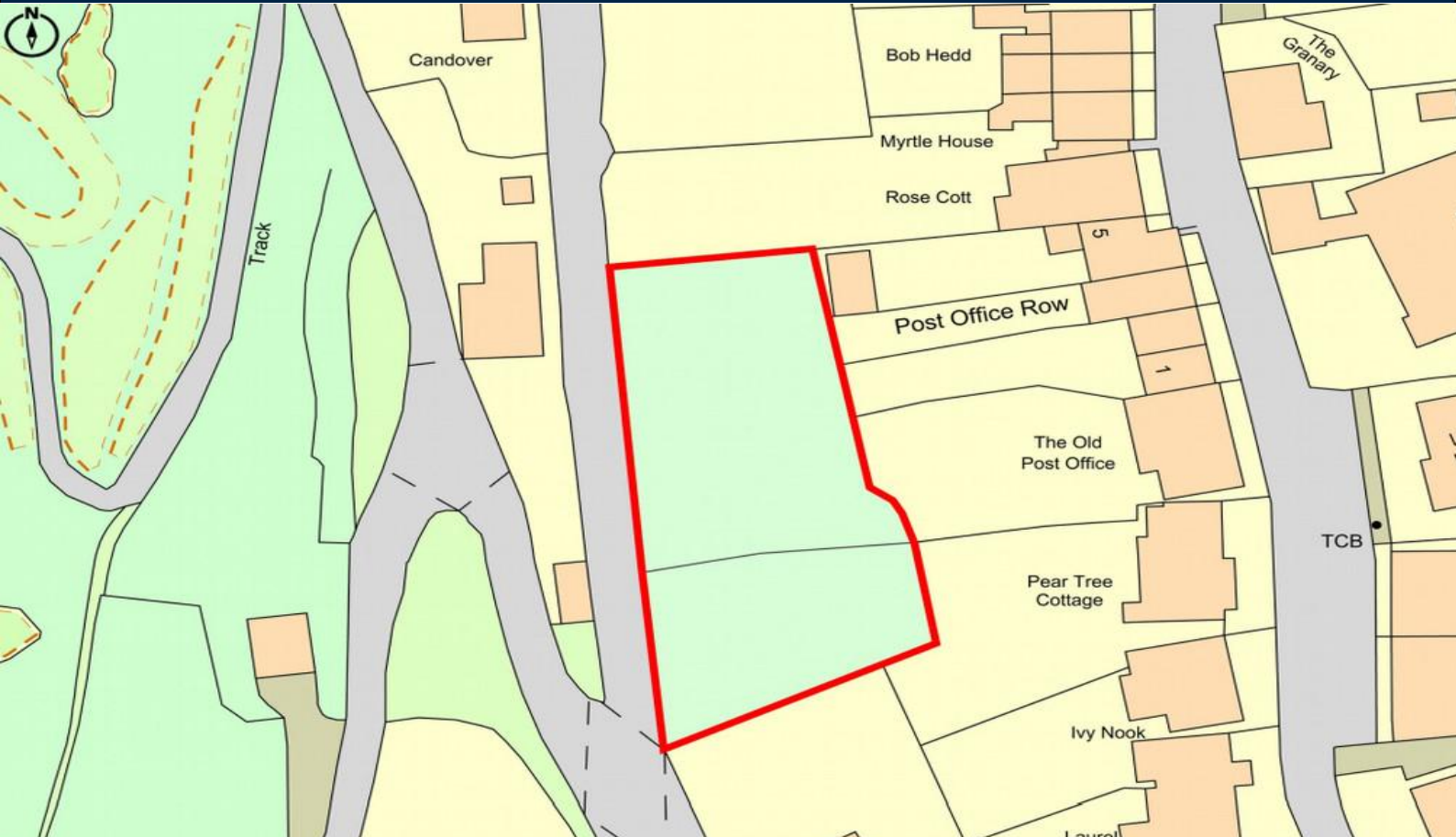




GARTH ROW
GWAELOD-Y-GARTH
CARDIFF CF15 9HS

OFFERS IN EXCESS OF

£30,000



**** LAND FOR SALE **** An opportunity to acquire this parcel of land situated off Garth Hill in the popular village of Gwaelod Y Garth. The land measures approximately 0.28 acres (1.13 ha) with the topography being on a gradient which includes a range mature trees. MGY are not advised of any services provided. No planning consent for residential usage - we advise all interested parties to make their own enquiries.