

Land At Corbett Street,

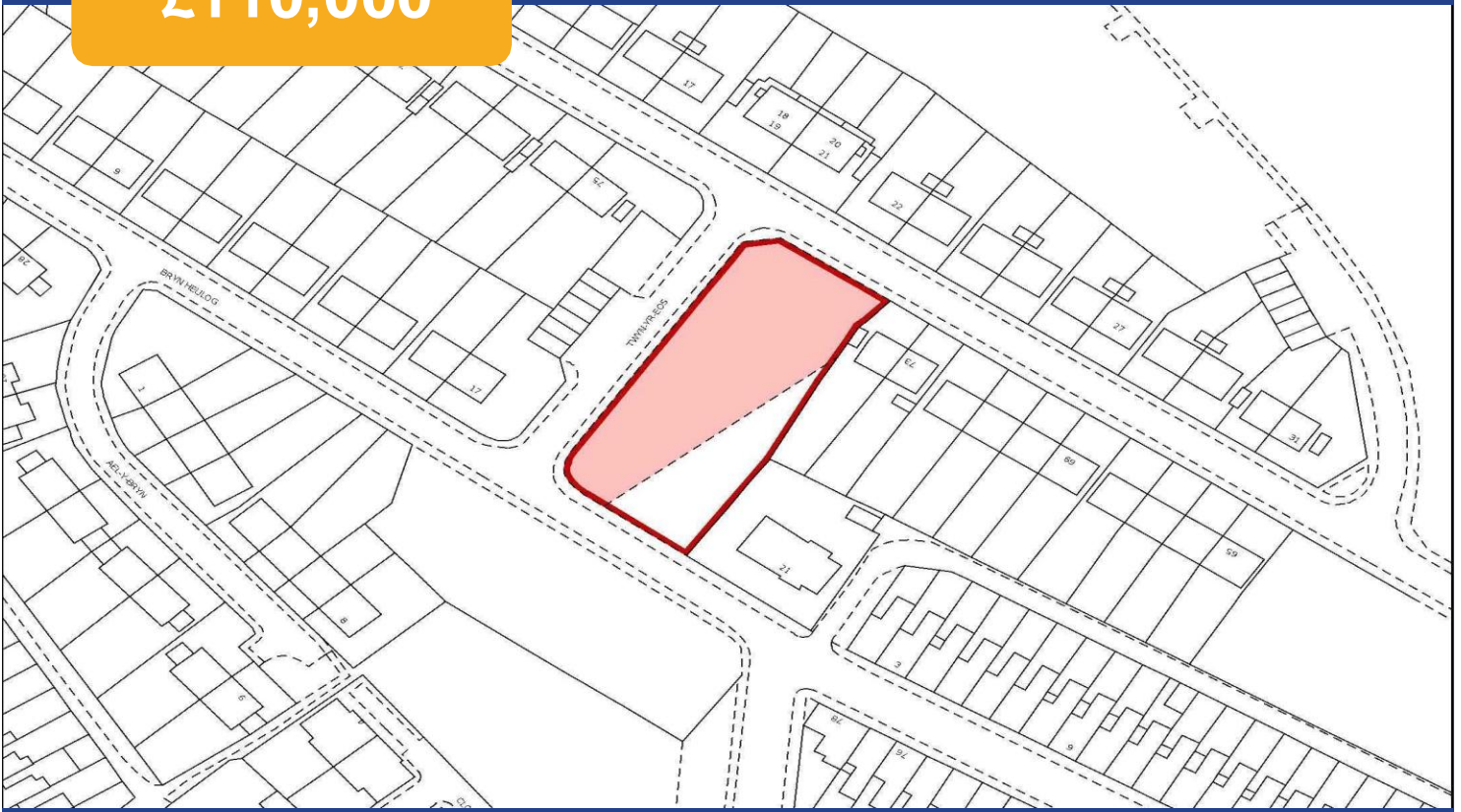
Treherbert, Treorchy, CF42 5ER



Estate Agents and
Chartered Surveyors

Asking Price Of

£110,000



Building Plot/ Land With Full Planning Permission

Property Description

We are pleased to offer for this clear land site, with the benefit of full planning permission (planning no. 21/0665/10), for the construction of two blocks of self contained residential apartments, each with four, two bedroom units and a staff office, plus a separate building, housing support facilities. The site slopes uphill from Bryn Heulog to Corbett Street is surrounded by three made up and adopted highways, namely Corbett Street, Bryn Heulog and Twyn-Er-Eos. Treherbet is located in the Rhondda valley on the A4061 very close to the North West of Treorchy. Treherbet has a range of shops, schools leisure and transport facilities.

Tenure Freehold

Council Tax Band N/A

Site Area TBC

Viewing Arrangements
Strictly by appointment

PROPOSED ACCOMODATION

8 Self contained apartments, with shared service office and separate support building. plus on site car park.

Each apartment comprises

Entrance Hall: 8.5 m2.

A Lounge/Diner: 19.2 m2.

kitchen/Diner: 15.4 M2

Bedroom One with en-suite 15.0 m2 and 6 m2 respectively.

Bedroom two with en-suite

17.02m2 and 3.1 m2 respectively.

SUPPORT BUILDING

Comprising a laundry, staff office medical and staff WC.

office 11.8 m2

Laundry 17.4 m2

Medical store 2.8m2

Staff WC/washroom

Floorplans are available on request

EXTERIOR

On site car park / disabled parking / gardens and grounds / private terrace and roof terrace

USER AND PLANNING PERMISSION

Residential care sector/ planning permission 21/0665/10 was approved with conditions on 02/09/2021

Local Authority, Rhondda Cynon Taff

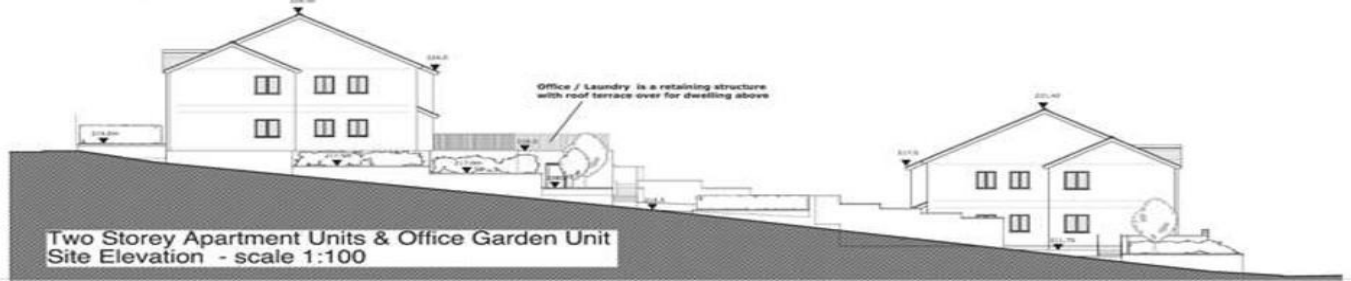
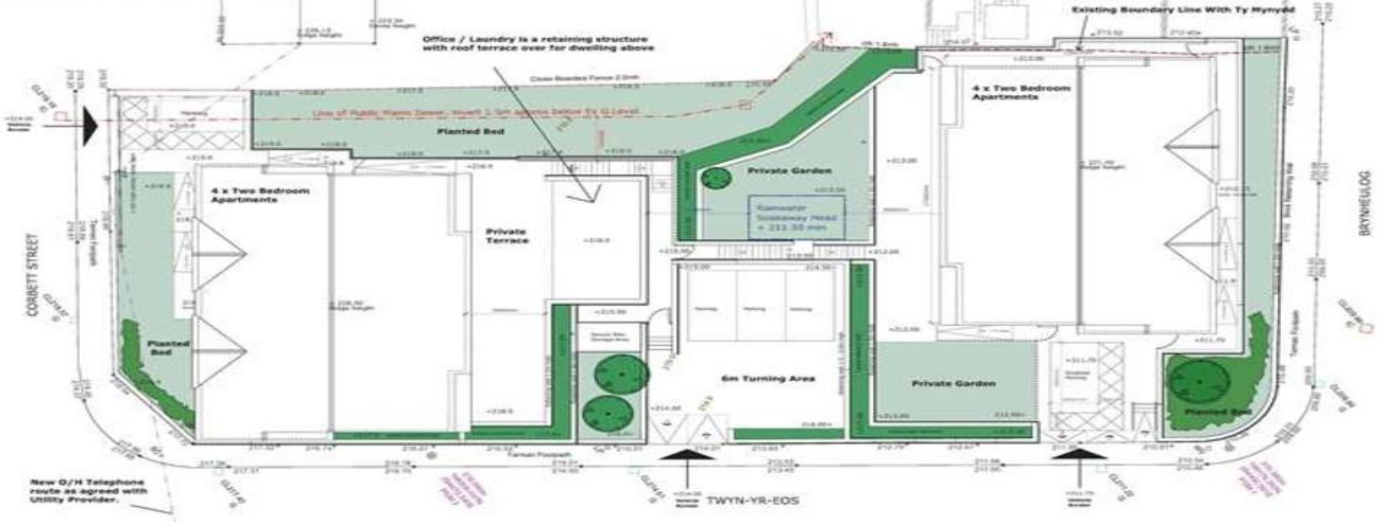
RATES

RV and Council tax to be assessed following development.

Corbett Street, Treherbert, Treorchy, CF42 5ER



Two Storey Apartment Units & Garden Unit
Sketch Site Plan - scale 1:100



Two Storey Apartment Units & Office Garden Unit
Site Elevation - scale 1:100

Corbett Street, Treherbert, Treorchy, CF42 5ER



Radyr 029 2084 2124

Radyr, 6 Station Road, Radyr, Cardiff, South
Glamorgan, CF15 8AA



mgys.co.uk

Important Notice: These particulars are prepared for guidance only and do not form whole or any part of any offer or contract. Whilst the particulars are given in good faith, they are not to be relied upon as being a statement or representation of fact. They are made without responsibility on the part of MGY Ltd or Vendor/lessor and the prospective purchaser/lessee should satisfy themselves by inspection or otherwise as to their accuracy. Neither MGY Ltd nor anyone in their employ, or the vendor/lessor, imply, make or give any representation/warranty whatsoever in relation to this property.