

Cymric Buildings,

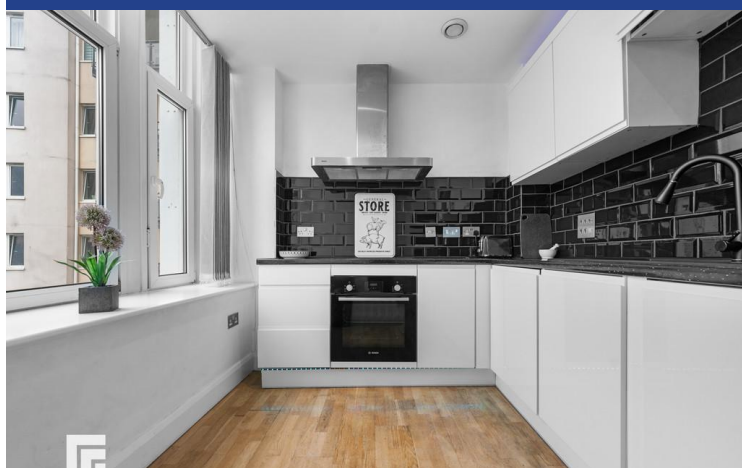
West Bute Street, Cardiff, CF10 5LL



Estate Agents and
Chartered Surveyors

Asking Price Of

£215,000



Two Bedroom Apartment

2

2

2

1

Property Description

****IMMACULATELY PRESENTED* NO CHAIN**** MGY are delighted to bring to market this spacious and modern apartment situated on the first floor of a Grade II listed limestone building, in the popular development Cymric Buildings, Cardiff Bay. The apartment is within walking distance to Cardiff Bay train station and Mermaid Quay, offering a variety of bars, shops and restaurants. The property briefly comprises spacious entrance hall, living room, kitchen, two double bedrooms, master with en-suite and bathroom. The unique apartment further benefits from double glazing throughout, a secure video entry intercom system and secure gated access to an allocated parking space. No chain.

Tenure Leasehold

Council Tax Band E

Floor Area Approx 904 sq ft

Viewing Arrangements
Strictly by appointment

ENTRANCE HALL

Entered via wooden door, with security spy hole. Large entrance hall. Engineered wood flooring. Wall mounted video entry intercom system. Storage cupboard, housing hot water tank. Doors leading to living room, bedrooms and bathroom.

LIVING ROOM

18' 2" x 11' 8" (5.56m x 3.58m)
Large double glazed uPVC windows to front aspect. Ample natural daylight. Engineered wood flooring. Ultra-high ceiling, enhancing the spacious living area. T.V Aerial point. Telephone point. Two wall mounted electric panel heaters.

KITCHEN

10' 2" x 7' 6" (3.10m x 2.30m)
Modernised kitchen. Large double glazed uPVC windows to front aspect. Ample natural daylight. Engineered wood flooring. Part tiled walls. Wall and base units, with work surfaces incorporating composite sink with drainer. Ample storage and mood lighting. Built in oven and four ring electric hob with stainless steel extractor hood over. Space for fridge freezer. Integrated dishwasher and washing machine. Extractor fan.

MASTER BEDROOM

17' 3" x 10' 4" (5.28m x 3.15m)
Double glazed uPVC windows to side aspect. Carpeted flooring. Built in double wardrobe. T.V Aerial point. Telephone point. Wall mounted electric panel heater. Spotlights. Door to:-

EN-SUITE

6' 2" x 5' 6" (1.89m x 1.68m)
Modern en-suite. Tiled flooring. Part tiled walls. Shower cubicle. Pedestal wash hand basin. W.C. Heated towel rail. Shaver point. Extractor fan.

BEDROOM TWO

11' 8" x 10' 11" (3.58m x 3.33m)
Double glazed uPVC windows to side aspect. Carpeted flooring. Built in double wardrobe. T.V Aerial point. Telephone point. Wall mounted electric panel heater. Spotlights. Door to:-

BATHROOM

7' 0" x 6' 0" (2.15m x 1.85m)
Modern bathroom. Tiled flooring. Part tiled walls. Panelled bath, with shower over and glass shower screen. Vanity enclosed wash hand basin. W.C. Heated towel rail. Shaver point. Wall mounted mirror. Extractor fan

ROOFTOP TERRACE

Communal roof terrace.

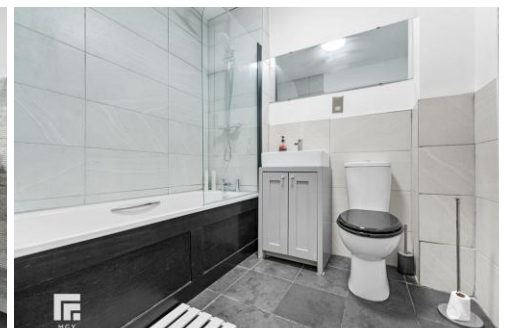
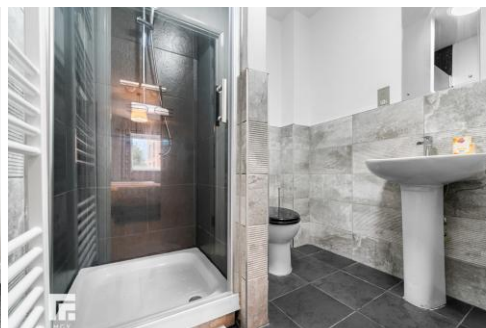
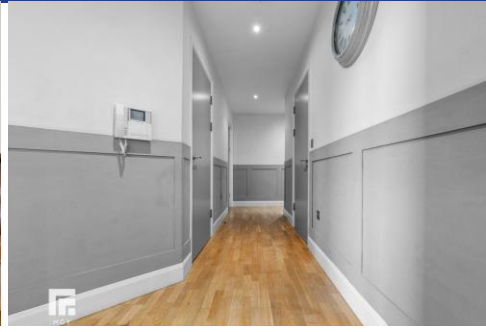
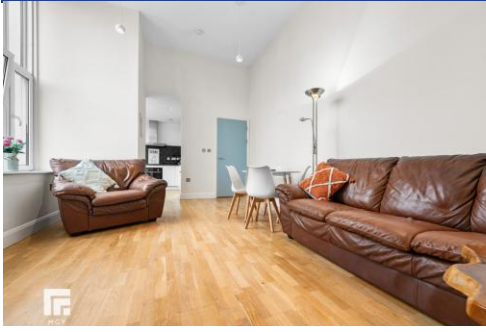
PARKING

Secure gated access to an allocated parking space.

TENURE

MGY are advised that the property is leasehold, with a term of 999 years from 2007. Service charges of £2,491.04 per annum, which includes buildings insurance, water rates, video entry intercom system, CCTV, lift maintenance, maintenance of internal and external communal areas, storage room for refuse and weekly collections, regular cleaning and refuse disposal, bike storage and gated access to an allocated parking space. Ground rent £500 per annum.

Cymric Buildings, West Bute Street, Cardiff, CF10 5LL



Cymric Buildings,
West Bute Street, Cardiff, CF10 5LL

Energy Efficiency Rating			
Score	Energy rating	Current	Potential
92+	A		
81-91	B		
69-80	C		
55-68	D	65 D	68 D
39-54	E		
21-38	F		
1-20	G		

Cardiff 029 2046 5466

13 Mount Stuart Square, Cardiff Bay, Cardiff,
South Glamorgan, CF10 5EE



mgy.co.uk

Important Notice: These particulars are prepared for guidance only and do not form whole or any part of any offer or contract. Whilst the particulars are given in good faith, they are not to be relied upon as being a statement or representation of fact. They are made without responsibility on the part of MGY Ltd or Vendor/lessor and the prospective purchaser/lessee should satisfy themselves by inspection or otherwise as to their accuracy. Neither MGY Ltd nor anyone in their employ, or the vendor/lessor, imply, make or give any representation/warranty whatsoever in relation to this property.