



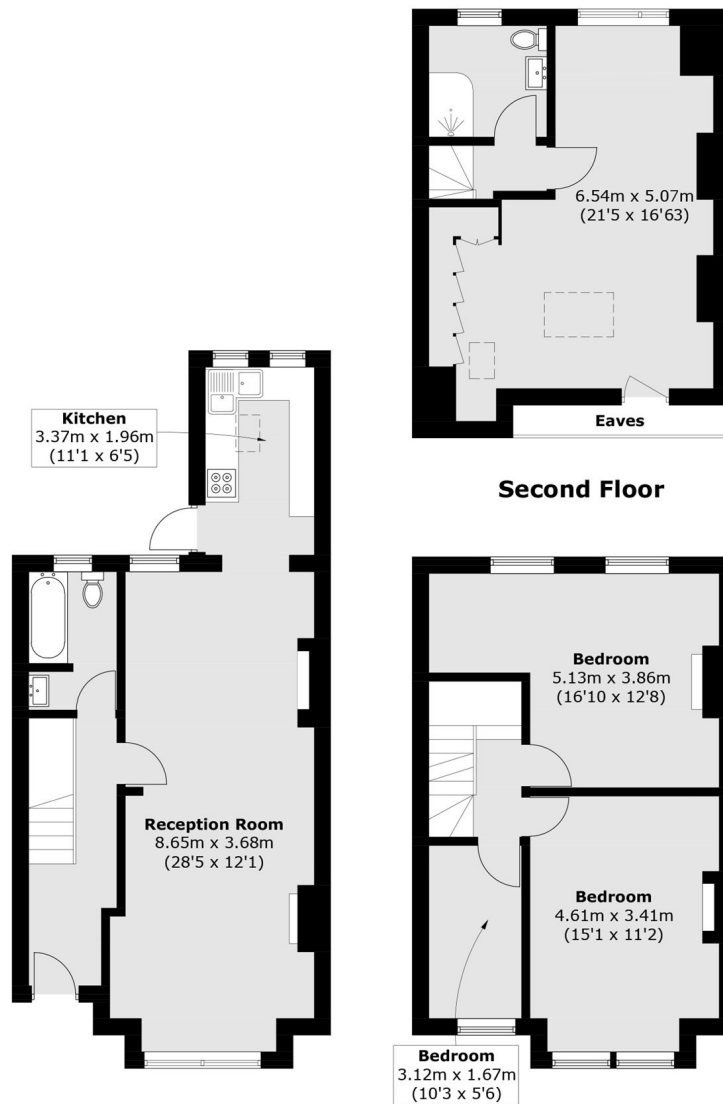
## **Lawn Gardens, W7**

**£799,999**

This four bedroom period property is being offered to the market with no onward chain. The property has a loft extension and a south facing private rear garden with further potential to extend.

Ideally located within the peaceful residential enclave of Hanwell Village, this property is just moments from Hanwell's Elizabeth line station as well as local parks, reputable schools and the wide range of amenities available along the Uxbridge Road.

- Four Bedrooms • Chain Free • Loft Converted •
- South Facing Garden • Mid-Terraced • Two Bathrooms •



**Ground Floor**

**First Floor**

Total area (approx.): 127.3 sq. m (1370.2 sq. ft)  
(Excluding Eaves)

Robertson Smith & Kempson Northfields Sales  
116 Northfield Avenue,  
London, W13 9RT  
020 8566 2340  
[northfieldssales@robertsonsmithandkempson.co.uk](mailto:northfieldssales@robertsonsmithandkempson.co.uk)

Energy Rating: D. We aim to make our particulars both accurate and reliable. However they are not guaranteed; nor do they form part of an offer or contract. If you require clarification on any points then please contact us, especially if you're traveling some distance to view. Please note that appliances and heating systems have not been tested and therefore no warranties can be given as to their good working order.