



## Factory Yard, W7

£650,000

This generously proportioned two bedroom, two bathroom apartment offers over 1,250 sq ft of modern living space.

Flooded with natural light, the property has a private west facing balcony with sunset views which can be accessed from both bedrooms and the living room.

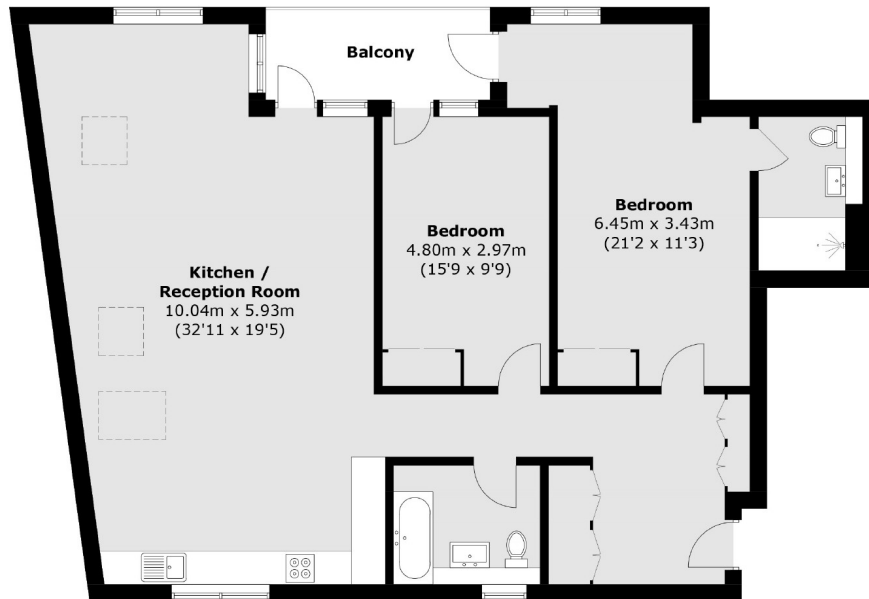


Ideally located in the center of Hanwell on a quiet cul-de-sac. This property has easy access to Hanwell (Elizabeth line) station and local bus routes. Just moments from Hanwell Broadway's many amenities including independent coffee shops, restaurants and grocery stores.

- Two Bedroom • Two Bathroom • Balcony •
  - New Build • 1,265 Sq Ft • Top Floor Apartment •
-







Total area (approx.): 117.6 sq. m (1,265.8 sq. ft)  
Balcony: 6.4 sq. m (68.9 sq. ft)

Robertson Smith & Kempson Hanwell Sales  
69 Greenford Avenue,  
London, W7 1LL  
020 8566 2339  
[hanwellsales@robertsonsmithandkempson.co.uk](mailto:hanwellsales@robertsonsmithandkempson.co.uk)

Energy Rating: B. We aim to make our particulars both accurate and reliable. However they are not guaranteed; nor do they form part of an offer or contract. If you require clarification on any points then please contact us, especially if you're traveling some distance to view. Please note that appliances and heating systems have not been tested and therefore no warranties can be given as to their good working order.