

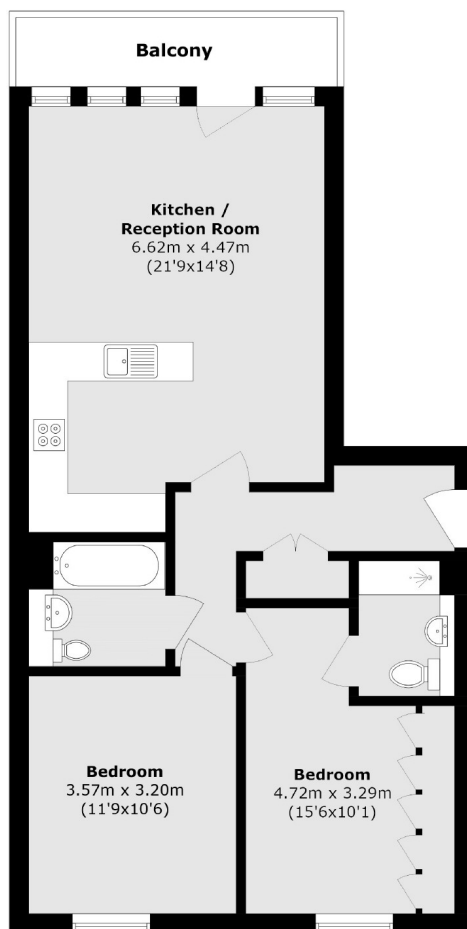


Holman Drive, UB2

£375,000

A two bedroom, two bathroom apartment in a modern development offering stylish and comfortable living. The property has a large open plan layout, ample storage, a sunny west facing balcony, access to communal gardens and lift access.

Located for easy access to Hanwell (Elizabeth line) and Boston Manor (Piccadilly line) stations. Further transport links and amenities are moments away on the Uxbridge Road.



Total area (approx.): 70.8 sq. m (762.1 sq. ft)

Balcony area (approx.): 5.3 sq. m (57.0 sq. ft)

Robertson Smith & Kempson Hanwell Sales
69 Greenford Avenue,
London, W7 1LL
020 8566 2339
hanwellsales@robertsonsmithandkempson.co.uk

Energy Rating: B. We aim to make our particulars both accurate and reliable. However they are not guaranteed; nor do they form part of an offer or contract. If you require clarification on any points then please contact us, especially if you're traveling some distance to view. Please note that appliances and heating systems have not been tested and therefore no warranties can be given as to their good working order.