



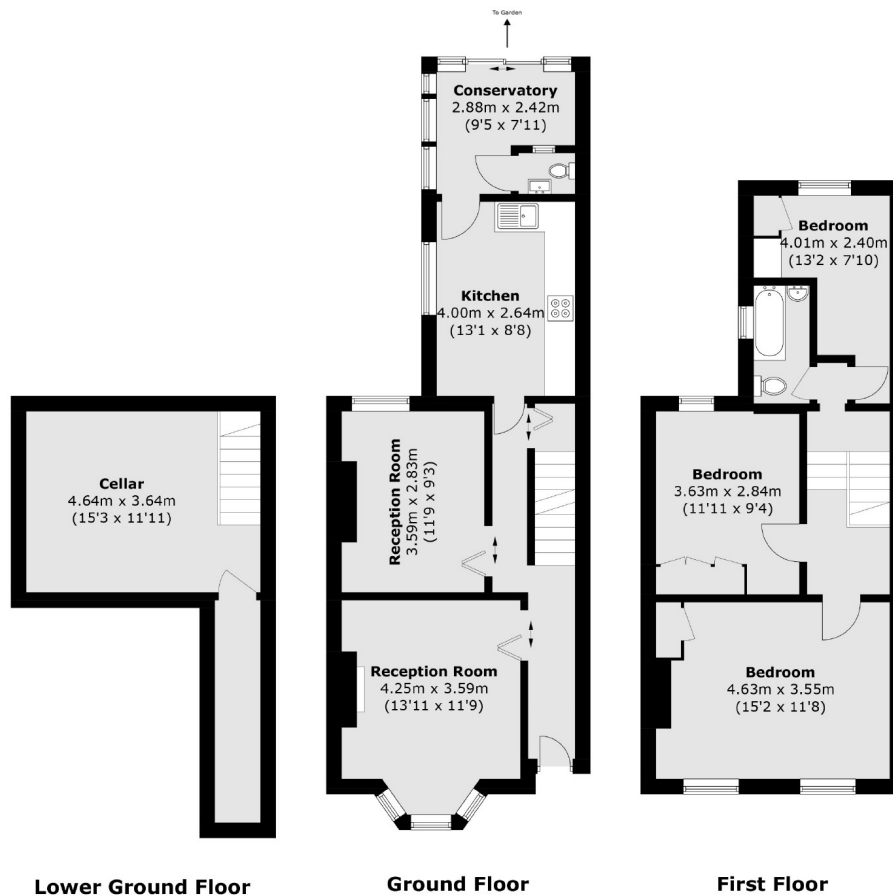
Rosebank Road, W7

£625,000

This three bedroom mid-terraced house is being offered to the market chain free. The property has further potential to extend (STPP) and has the additional bonus of a basement.

Ideally located for Hanwell (Elizabeth line) and Boston Manor (Piccadilly line) stations providing an excellent choice of transport links. Located within catchment of the Ofsted outstanding Elthorne Park high and Oaklands Primary schools. Hanwell Locks and many pubs and eateries are within walking distance.

- Three Bedroom • Chain Free • Olde Hanwell •
- Mid-Terrace • Private Garden • Basement •



Total area (approx.): 119.0 sq. m (1,280.9 sq. ft)

Robertson Smith & Kempson Hanwell Sales
 69 Greenford Avenue,
 London, W7 1LL
 020 8566 2339
hanwellsales@robertsonsmithandkempson.co.uk

Energy Rating: . We aim to make our particulars both accurate and reliable. However they are not guaranteed; nor do they form part of an offer or contract. If you require clarification on any points then please contact us, especially if you're traveling some distance to view. Please note that appliances and heating systems have not been tested and therefore no warranties can be given as to their good working order.