

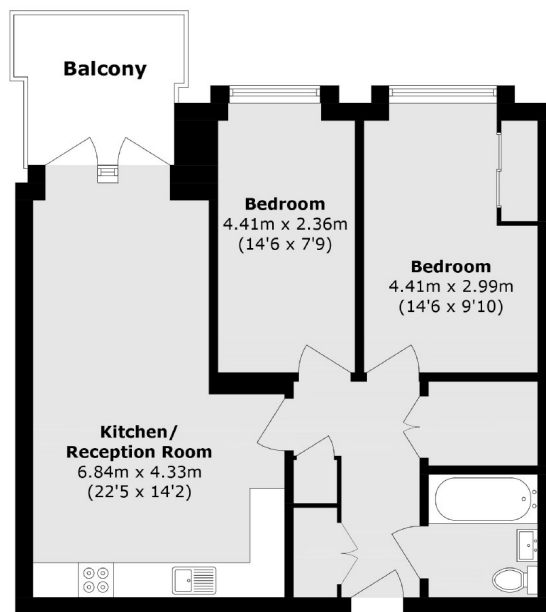


Copley Close, W7

£460,000

This two double bedroom purpose built apartment has great natural light and views from the living room balcony. There is also a modern fitted kitchen in the open plan layout. The flat has two hallway cupboards for convenient storage options.

Bus links to Ealing Broadway are within walking distance and the property is just moments from Castle Bar Park station, providing excellent access to both Elizabeth and Central lines.



Total area (approx.): 69.3 sq. m (745.9 sq. ft)
Balcony area (approx.): 7.0 sq. m (75.3 sq. ft)

Robertson Smith & Kempson Hanwell Sales
69 Greenford Avenue,
London, W7 1LL
020 8566 2339
hanwellsales@robertsonsmithandkempson.co.uk

Energy Rating: B. We aim to make our particulars both accurate and reliable. However they are not guaranteed; nor do they form part of an offer or contract. If you require clarification on any points then please contact us, especially if you're traveling some distance to view. Please note that appliances and heating systems have not been tested and therefore no warranties can be given as to their good working order.