

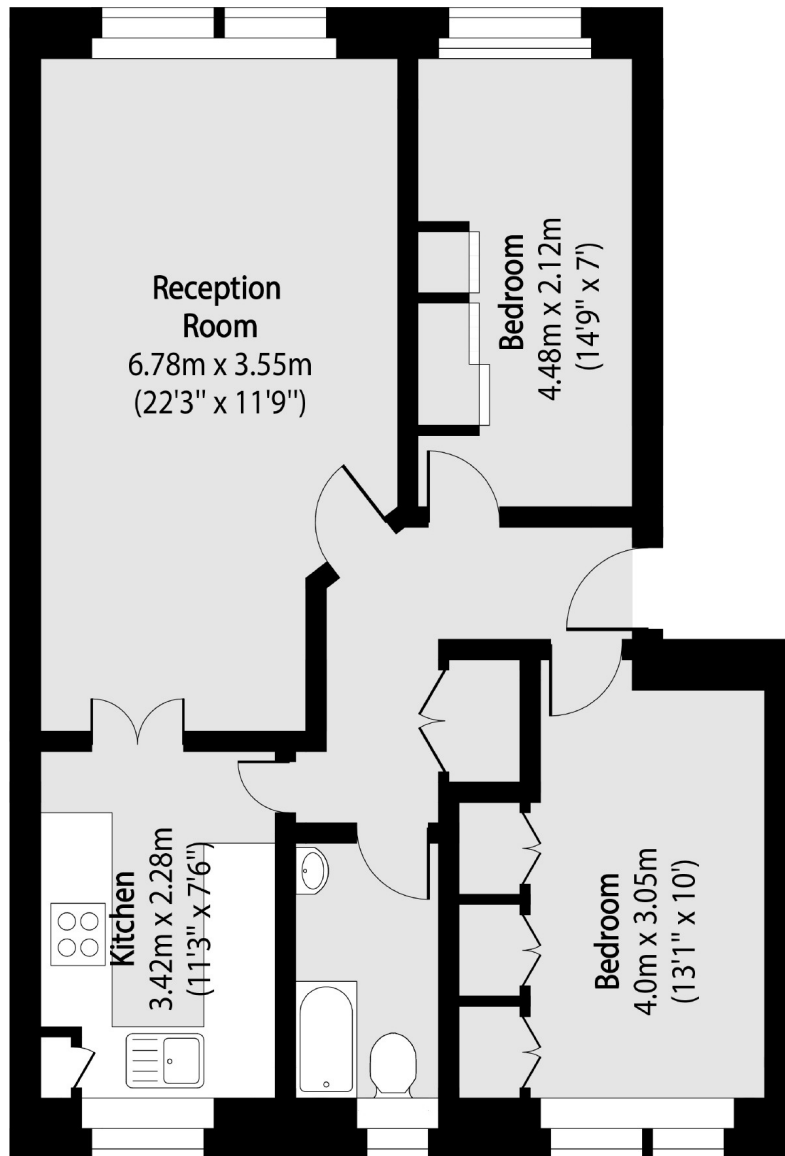


Silverdale Close, W7

£375,000

A spacious two bedroom purpose built flat with a south facing reception/dining room. The property has a share of freehold, garage, off-street parking and no onward chain. The flat has been redecorated throughout and has new kitchen worktops.

Close to the shops, restaurants and cafes on Uxbridge Road and Hanwell station (Elizabeth line) for easy access into central London.



Total area (approx): 66.34 sq m (714 sq. ft)

Robertson Smith & Kempson Hanwell Sales
69 Greenford Avenue,
London, W7 1LL
020 8566 2339
hanwellsales@robertsonsmithandkempson.co.uk

Energy Rating: C. We aim to make our particulars both accurate and reliable. However they are not guaranteed; nor do they form part of an offer or contract. If you require clarification on any points then please contact us, especially if you're traveling some distance to view. Please note that appliances and heating systems have not been tested and therefore no warranties can be given as to their good working order.