



## Bridge Avenue, W7

£775,000

This fully extended, four bedroom end of terrace home, has a west facing garden backing onto Brent Valley Park. There is also the potential to create driveway parking if desired, subject to the usual consents.



The house has been significantly extended and improved, resulting in a comfortable family home on a residential street.

On the ground floor, the living space has been opened up to allow maximum natural light. There is also a guest WC and understairs storage. The rear of the property has been extended to create a much larger kitchen, with an island for extra workspace and storage. Doors lead out onto the decked patio area and west facing garden which also has side access and a garden shed.

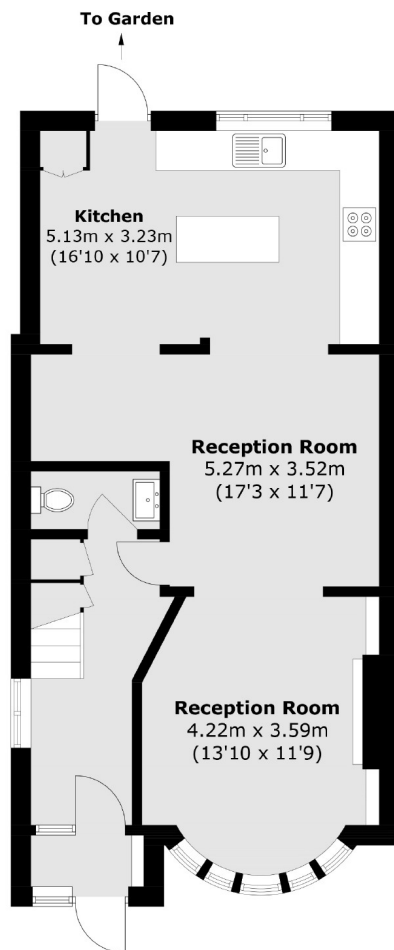
On the first floor there are two double bedrooms, one single bedroom and a family bathroom.

The loft conversion adds the master bedroom and en suite shower room with underfloor heating. There is also a fantastic amount of storage, with a fitted wardrobe and usable space in the eaves.

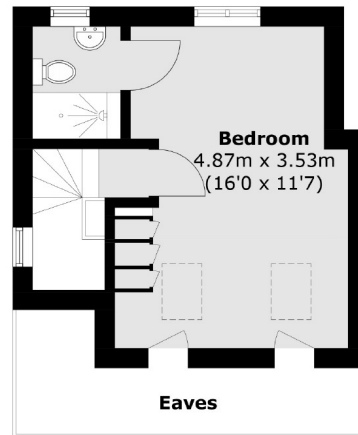
Ideally located close to the well regarded Mayfield Primary School and a range of other local schools. The property has easy access to Hanwell station's Elizabeth line and many bus links. There are a diverse range of woodland and park walks a short stroll away, perfect for young families.

- Fully Extended • West Facing Garden • Four Bedrooms •
  - Two Bathrooms • Guest WC • Modern Kitchen •
-

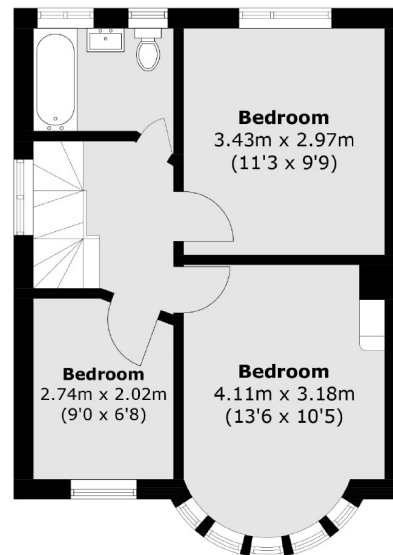




**Ground Floor**



**Second Floor**



**First Floor**

Total area (approx.): 117.5 sq. m (1,246.7 sq. ft)  
(Excluding Eaves)

Robertson Smith & Kempson Hanwell Sales  
69 Greenford Avenue,  
London, W7 1LL  
020 8566 2339  
[hanwellsales@robertsonsmithandkempson.co.uk](mailto:hanwellsales@robertsonsmithandkempson.co.uk)

Energy Rating: D. We aim to make our particulars both accurate and reliable. However they are not guaranteed; nor do they form part of an offer or contract. If you require clarification on any points then please contact us, especially if you're traveling some distance to view. Please note that appliances and heating systems have not been tested and therefore no warranties can be given as to their good working order.