



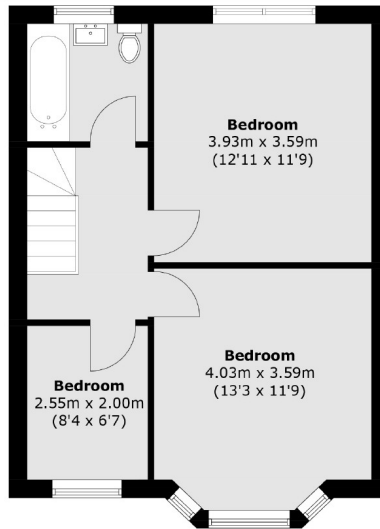
Drayton Bridge Road, W7

£625,000

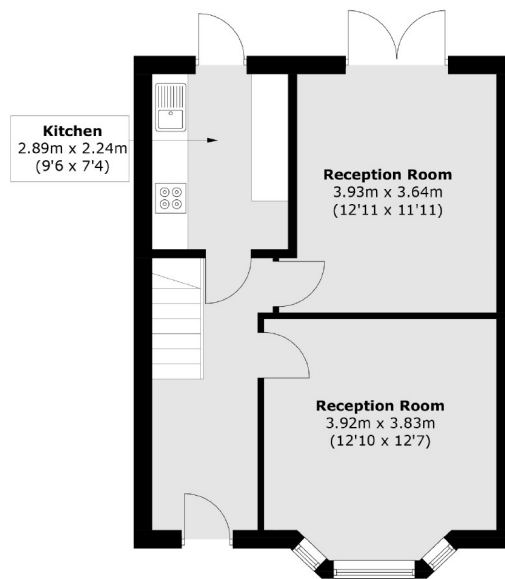
This three bedroom mid-terrace house is being offered to the market with no onward chain. The property is in need of modernisation with potential to extend (STPP).

Ideally located for various bus links to Ealing Broadway and Greenford, Hanwell and West Ealing Elizabeth Line, Drayton Green station and well regarded schools, including Hobbayne primary and Drayton Manor high school.

- Three Bedroom • Chain Free • Freehold •
- Private Garden • Potential to Extend (STPP) • Elizabeth Line •



First Floor



Ground Floor

Total area (approx.): 88.5 sq. m (952.5 sq. ft)

Robertson Smith & Kempson Hanwell Sales
69 Greenford Avenue,
London, W7 1LL
020 8566 2339
hanwellsales@robertsonsmithandkempson.co.uk

Energy Rating: D. We aim to make our particulars both accurate and reliable. However they are not guaranteed; nor do they form part of an offer or contract. If you require clarification on any points then please contact us, especially if you're traveling some distance to view. Please note that appliances and heating systems have not been tested and therefore no warranties can be given as to their good working order.