



Healum Avenue, UB2

£575,000

A three bedroom, two bathroom penthouse apartment in the sought after area of the West Works. The property offers in excess of 1000 sq.ft of accommodation and has breathtaking panoramic views across west London, from a large private balcony.



Experience the pinnacle of luxury living in this exquisite three bedroom penthouse, perfectly located in the heart of Southall, West London. Set in a vibrant and evolving area, this premium residence offers spacious living with an unrivalled connection to central London via the nearby Elizabeth line station.

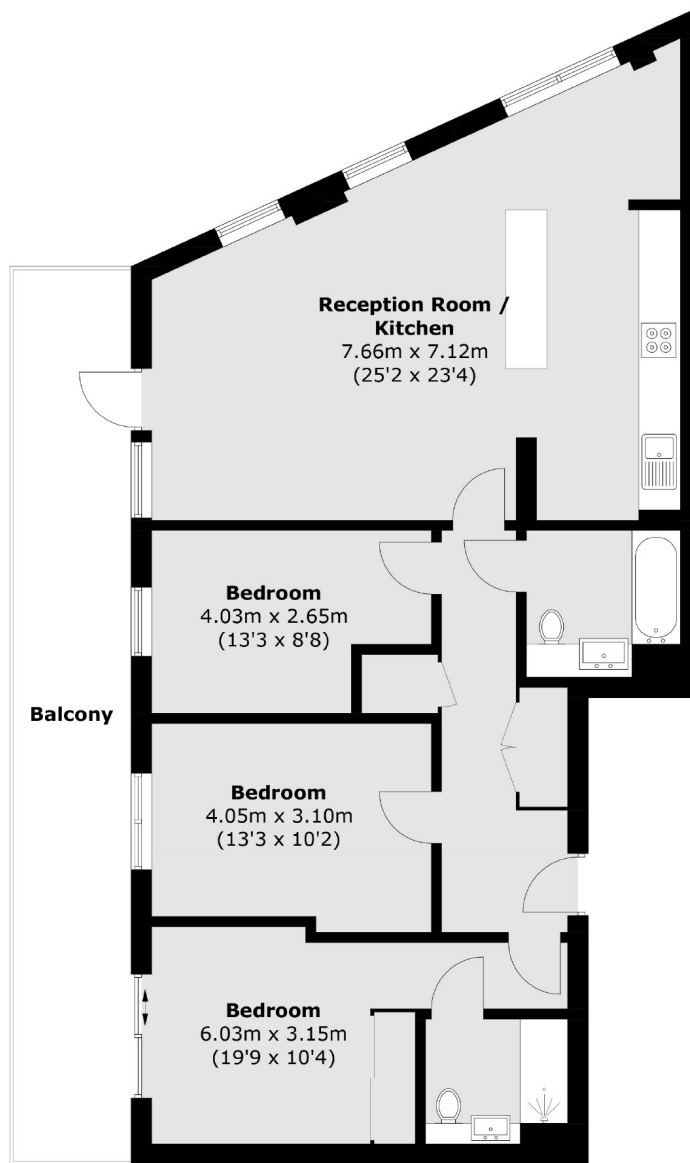
The flat has three spacious bedrooms, thoughtfully designed with high ceilings and large windows, allowing natural light to flood each room. A beautifully integrated living and dining space, perfect for entertaining, is complemented by a modern kitchen with premium appliances.

The flat also benefits from an expansive outdoor space offering panoramic views, perfect for relaxing or hosting guests. This penthouse offers a rare blend of luxury, space and connectivity ensuring a lifestyle of both comfort and convenience. Don't miss the opportunity to own a premium residence in one of London's fastest growing areas.

Located moments from Southall station (Elizabeth line), facilitating direct access to central London and Heathrow airport within 20 minutes. Southall offers a rich cultural experience with a thriving local scene, diverse eateries, shopping and green spaces.

- Penthouse Apartment • Close To Amenities • Three Bedrooms •
 - Two Bathrooms • Breathtaking Views • Southall Station Near •
-





Total area (approx.): 98.9 sq. m (1,064.5 sq. ft)
Balcony: 22.1 sq. m (237.8 sq. ft)

Robertson Smith & Kempson Hanwell Sales
69 Greenford Avenue,
London, W7 1LL
020 8566 2339
hanwellsales@robertsonsmithandkempson.co.uk

Energy Rating: B. We aim to make our particulars both accurate and reliable. However they are not guaranteed; nor do they form part of an offer or contract. If you require clarification on any points then please contact us, especially if you're traveling some distance to view. Please note that appliances and heating systems have not been tested and therefore no warranties can be given as to their good working order.