

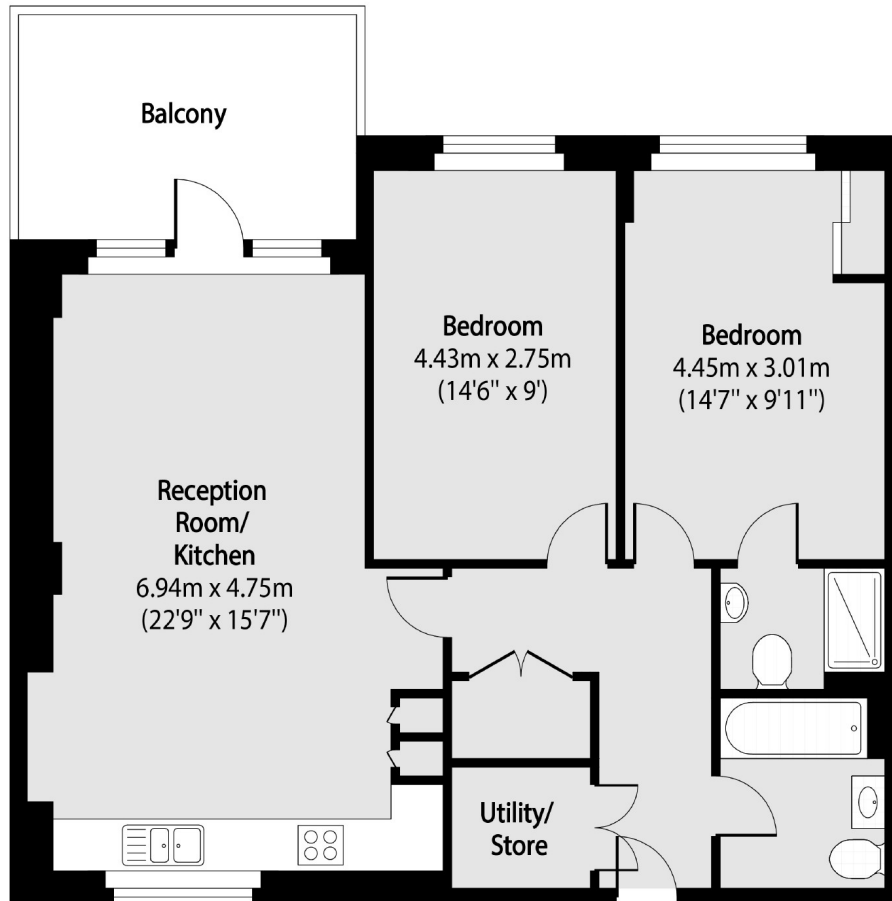


Copley Close, W7

£465,000

A top floor two double bedroom (one with an en suite) apartment with an abundance of natural light, a modern open plan kitchen and a family bathroom. The property benefits from plenty of storage space and a large balcony with stunning views.

Located close to excellent bus links to Ealing Broadway and moments from Castle Bar Park station, providing excellent access to the Elizabeth and Central lines and links into central London.



Total area (approx): 75.28 sq m (810 sq. ft)

Balcony total area (approx): 10.14 sq m (109 sq. ft)

Robertson Smith & Kempson Hanwell Sales
69 Greenford Avenue,
London, W7 1LL
020 8566 2339
hanwellsales@robertsonsmithandkempson.co.uk

Energy Rating: B. We aim to make our particulars both accurate and reliable. However they are not guaranteed; nor do they form part of an offer or contract. If you require clarification on any points then please contact us, especially if you're traveling some distance to view. Please note that appliances and heating systems have not been tested and therefore no warranties can be given as to their good working order.