



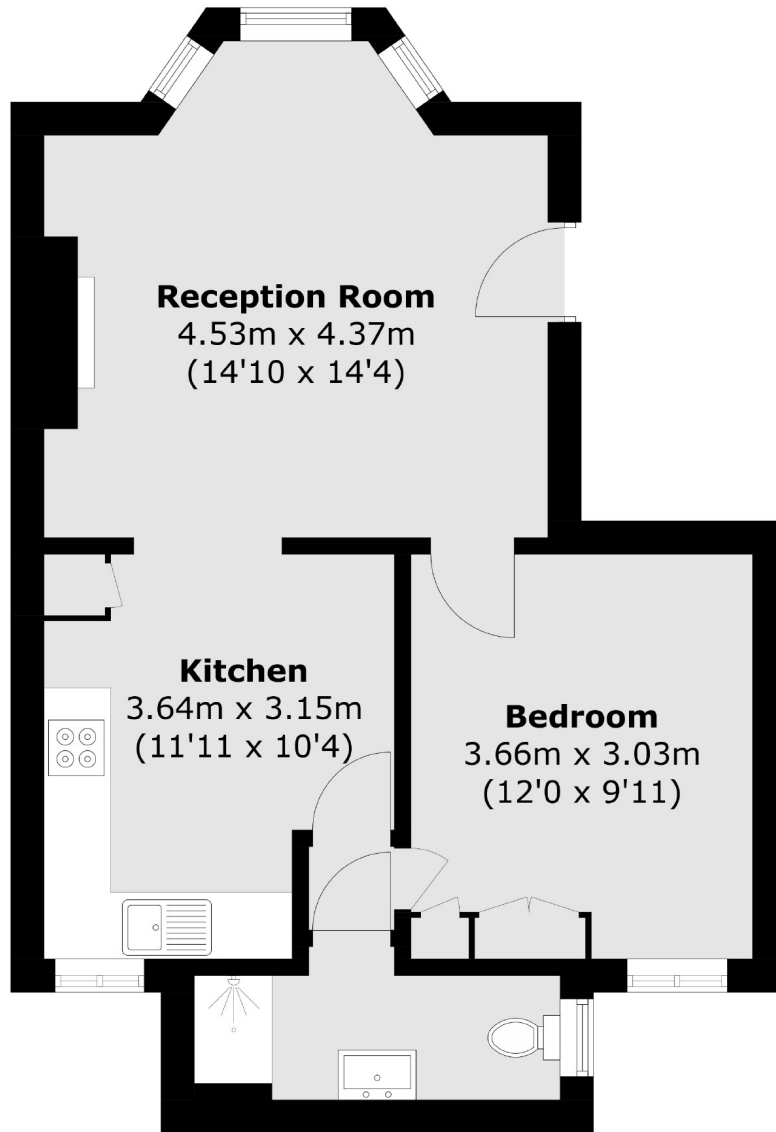
## St. Margarets Road, W7

£354,950

This beautifully presented ground floor, one bedroom Victorian conversion flat in the sought-after Olde Hanwell area, has a host of period features such as high ceilings and an original fireplace. There is ample storage space and a private share of the rear garden. The flat is sold with no onward chain.

Conveniently located for both Hanwell station (Elizabeth line) and Boston Manor (Piccadilly line) stations, offering easy access into London. There are also a range of walks along the canal or Elthorne Park and the popular Fox Inn pub is close by.

- No Onward Chain • Share Of Garden • Olde Hanwell •
- Period Conversion • Ground Floor • One Bedroom •



Total area (approx.): 46.2 sq. m (497.3 sq. ft)

Robertson Smith & Kempson Hanwell Sales  
69 Greenford Avenue,  
London, W7 1LL  
020 8566 2339  
[hanwellsales@robertsonsmithandkempson.co.uk](mailto:hanwellsales@robertsonsmithandkempson.co.uk)

Energy Rating: D. We aim to make our particulars both accurate and reliable. However they are not guaranteed; nor do they form part of an offer or contract. If you require clarification on any points then please contact us, especially if you're traveling some distance to view. Please note that appliances and heating systems have not been tested and therefore no warranties can be given as to their good working order.