



## Cumberland Road, W7

£600,000

This split-level three bedroom maisonette is immaculately presented throughout and benefits from direct access to a private garden and a long lease.

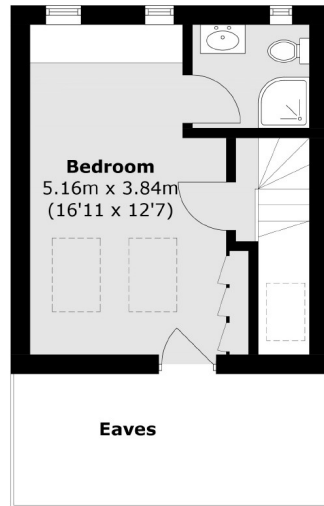


Arranged over two floors, this split-level maisonette has been recently refurbished throughout offering three bedrooms with a family bathroom and an additional en suite bathroom off the principal bedroom. The property has a living room with an additional eat in kitchen/dining room with direct access onto a private south facing garden.

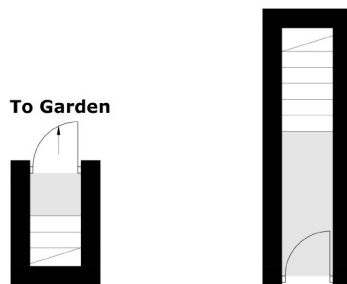
Ideally located for local outstanding schools including Oaklands Primary School and Elthorne Park High School. Transport links include Hanwell (Elizabeth line) & Boston Manor (Piccadilly line) stations as well as many varied and frequent bus routes on Boston Road. Elthorne Park is just a short stroll from the flat providing an amazing outdoor amenity.

- Three Bedrooms • Split-Level • Private Garden •
- Maisonette • Long Lease • Two Bathrooms •

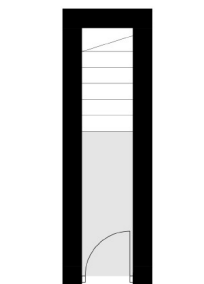




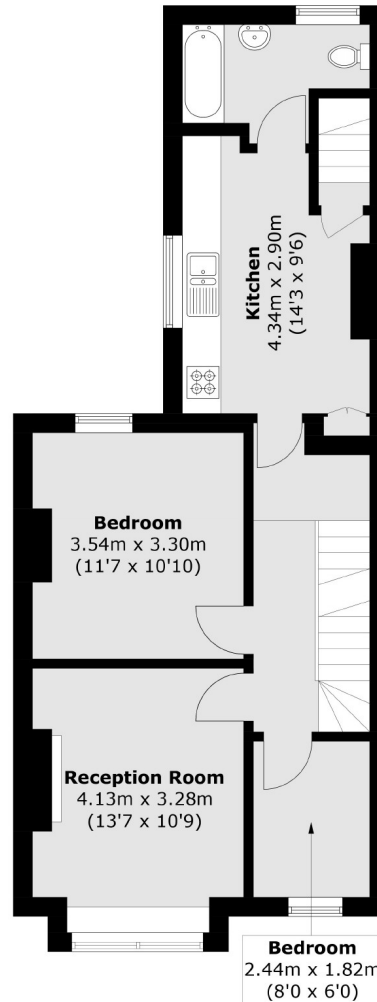
**Second Floor**



**Ground Floor**



**Ground Floor**



**First Floor**

Total area (approx.): 85.2 sq. m (916.9 sq. ft)  
(Excluding Eaves)

Robertson Smith & Kempson Hanwell Sales  
69 Greenford Avenue,  
London, W7 1LL  
020 8566 2339  
[hanwellsales@robertsonsmithandkempson.co.uk](mailto:hanwellsales@robertsonsmithandkempson.co.uk)

Energy Rating: D. We aim to make our particulars both accurate and reliable. However they are not guaranteed; nor do they form part of an offer or contract. If you require clarification on any points then please contact us, especially if you're traveling some distance to view. Please note that appliances and heating systems have not been tested and therefore no warranties can be given as to their good working order.