



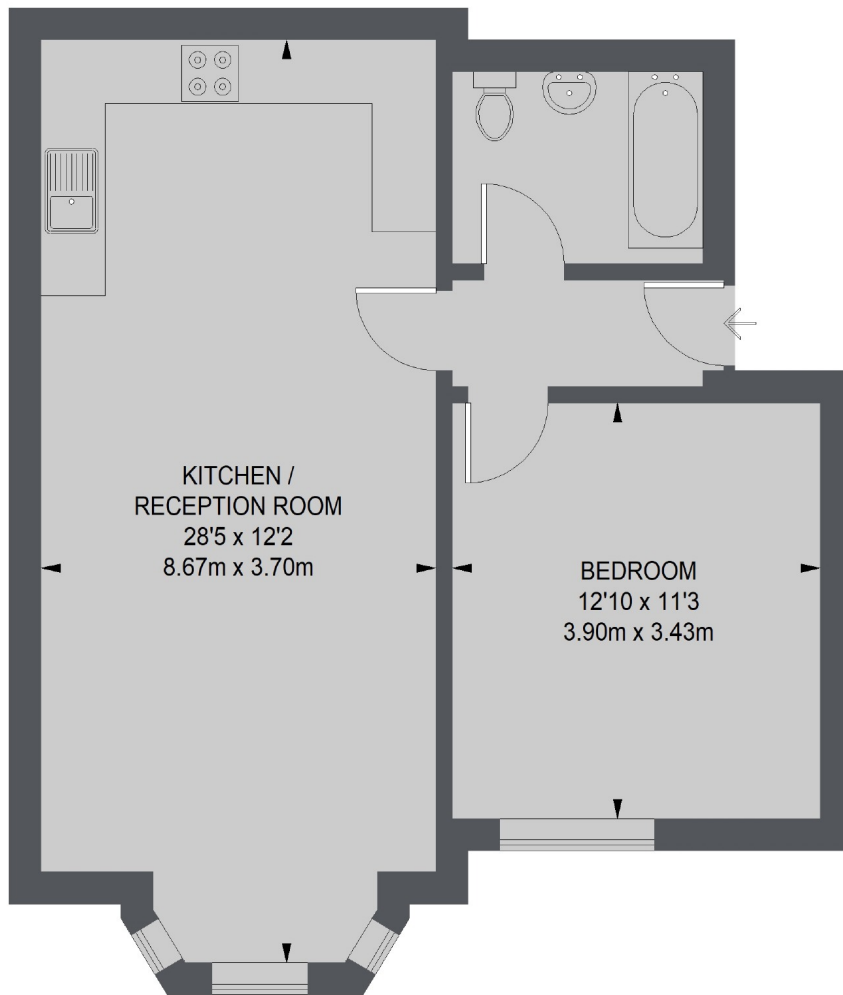
Boston Road, W7

£355,000

This one bedroom apartment is being offered to the market with no onward chain. The property is finished to a high standard throughout with a long lease.

Ideally located with easy access to Hanwell Station (Elizabeth Line) and Boston Manor Station (Picadilly Line). The property is surrounded by local amenities, with both Elthorne Park and Hanwells 'Meadow' a short stroll away.

- One Bedroom • High Specification • Olde Hanwell •
- Excellent Transport • Elthorne Park • Long Lease •



TOTAL APPROX. FLOOR AREA 565 SQ. FT. (52.5 SQ. M.)

Robertson Smith & Kempson Hanwell Sales
69 Greenford Avenue,
London, W7 1LL
020 8566 2339
hanwellsales@robertsonsmithandkempson.co.uk

Energy Rating: C. We aim to make our particulars both accurate and reliable. However they are not guaranteed; nor do they form part of an offer or contract. If you require clarification on any points then please contact us, especially if you're traveling some distance to view. Please note that appliances and heating systems have not been tested and therefore no warranties can be given as to their good working order.