



Bridge Avenue, W7

£750,000

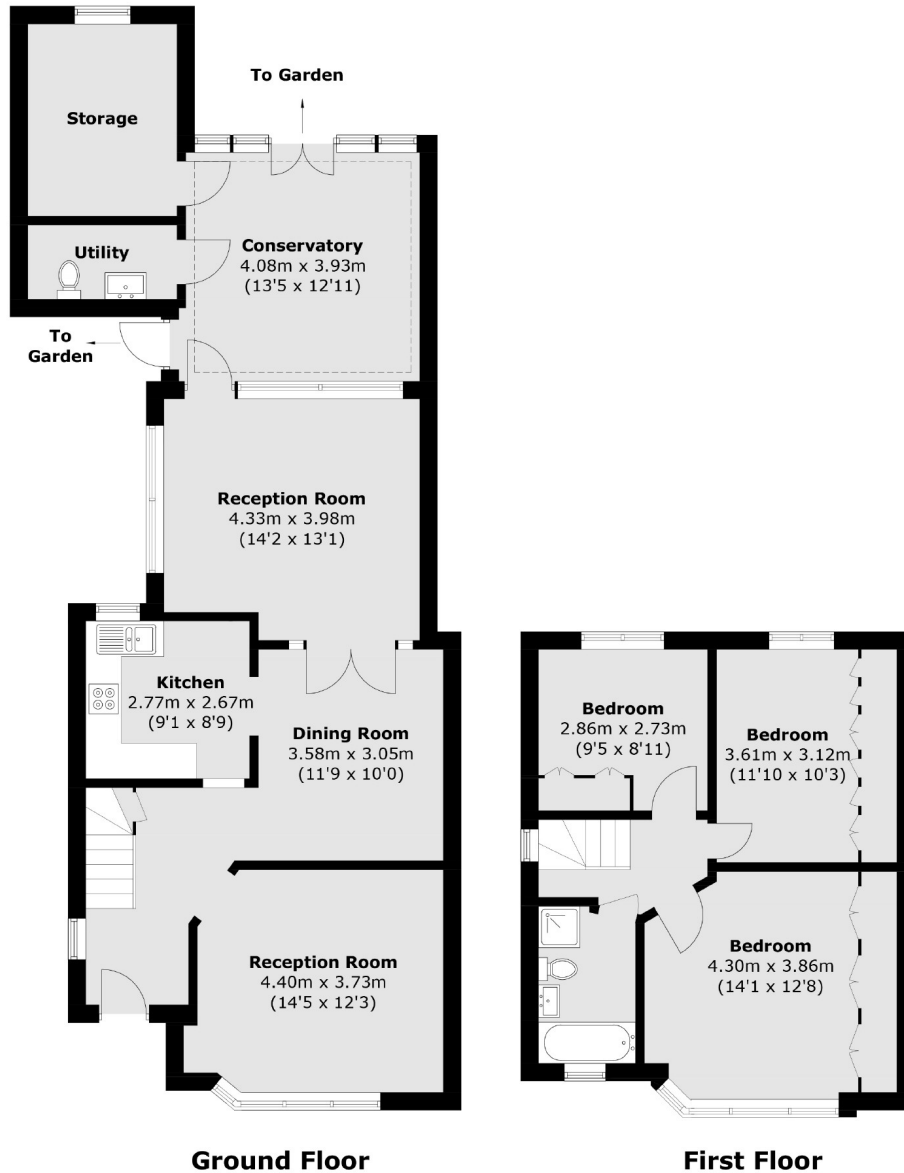
This well presented three double bedroom family home has been extended to the rear. With an additional living room, utility room and downstairs WC this is the ideal family home. The property also has off-street parking for multiple cars and a west facing garden.



Ideally located just moments from the sought after Mayfield Primary School amongst other well regarded local schools, with easy access to Hanwell station's Elizabeth line and many bus links. The much renowned 'Bunny Park' is a short stroll away, perfect for young families.

- Three Double Bedrooms • Off-Street Parking • Rear Extended •
- West Facing Garden • Garage • Potential To Extend •





Total area (approx.): 135.5 sq. m (1,458.5 sq. ft)

Robertson Smith & Kempson Hanwell Sales
69 Greenford Avenue,
London, W7 1LL
020 8566 2339
hanwellsales@robertsonsmithandkempson.co.uk

Energy Rating: . We aim to make our particulars both accurate and reliable. However they are not guaranteed; nor do they form part of an offer or contract. If you require clarification on any points then please contact us, especially if you're traveling some distance to view. Please note that appliances and heating systems have not been tested and therefore no warranties can be given as to their good working order.