



Myrtle Gardens, W7

£850,000

This stunning three bedroom Edwardian home has been recently renovated throughout to the highest standard whilst retaining many original period features. The large open plan kitchen/dining room has bi-folding doors leading to a south facing landscaped garden.

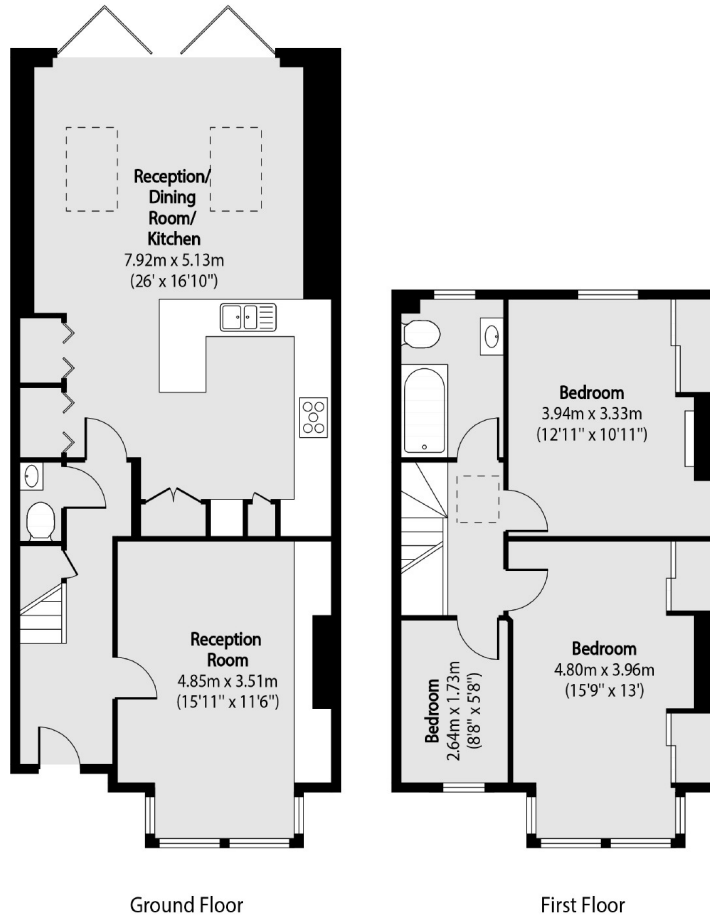


This property has been thoughtfully renovated to incorporate modern and period features, including a restored original stained glass front door, an original fireplace and cornicing/ceiling rose. The ground floor has a separate reception room with a hallway opening onto an open plan kitchen/dining area leading onto a south facing landscaped garden. There is an additional downstairs WC. The first floor has two double bedrooms, one single bedroom and a family bathroom. There is further potential to extend into the loft (STPP).

Ideally located within Hanwell Village, only 0.2 miles from Hanwell station (Elizabeth line). There are multiple green spaces to choose from nearby including the popular 'Bunny Park', along with a number of outstanding primary and secondary schools.

- Three Bedroom • Recently Renovated • Underfloor Heating •
 - South Facing Garden • Elizabeth Line • Downstairs WC •
-





Total area (approx): 101.82 sq m (1096 sq. ft)

Robertson Smith & Kempson Hanwell Sales
69 Greenford Avenue,
London, W7 1LL
020 8566 2339
hanwellsales@robertsonsmithandkempson.co.uk

Energy Rating: D. We aim to make our particulars both accurate and reliable. However they are not guaranteed; nor do they form part of an offer or contract. If you require clarification on any points then please contact us, especially if you're traveling some distance to view. Please note that appliances and heating systems have not been tested and therefore no warranties can be given as to their good working order.