



Cherington Road, W7

£295,000

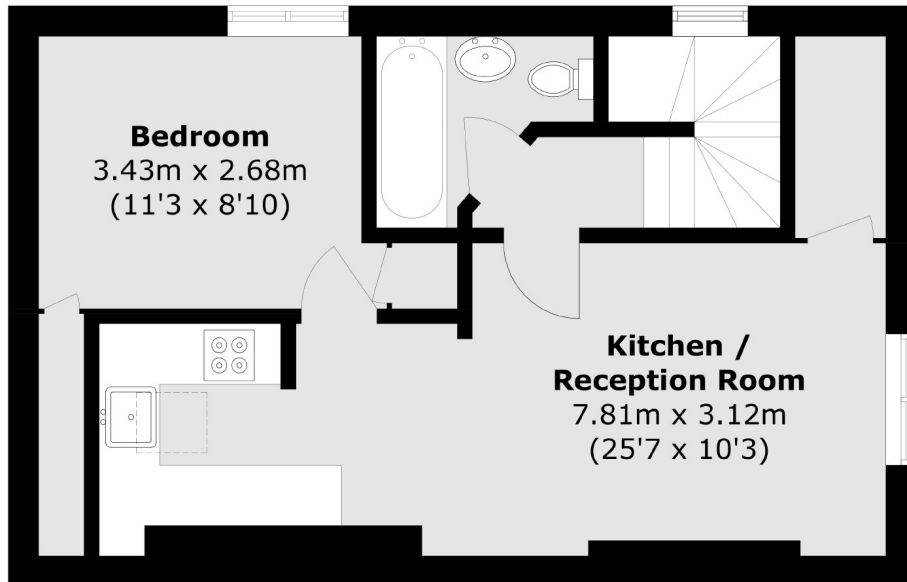
This top floor period conversion is being offered to the market with no onward chain, a share of the freehold and the additional benefit of a private south-facing garden.



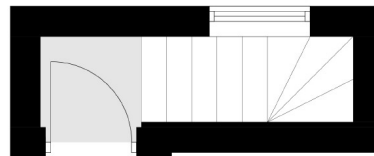
Ideally located in the heart of Hanwell, only 0.2 miles from the nearby Elizabeth line station, with local shops, cafés and frequent bus links just moments away.

- One Bedroom • Chain Free • Private Garden •
 - Period Conversion • Share Of Freehold • Top Floor Flat •
-





Second Floor



Total area (approx.): 46.1 sq. m (496.2 sq. ft)

Robertson Smith & Kempson Hanwell Sales
69 Greenford Avenue,
London, W7 1LL
020 8566 2339
hanwellsales@robertsonsmithandkempson.co.uk

Energy Rating: D. We aim to make our particulars both accurate and reliable. However they are not guaranteed; nor do they form part of an offer or contract. If you require clarification on any points then please contact us, especially if you're traveling some distance to view. Please note that appliances and heating systems have not been tested and therefore no warranties can be given as to their good working order.