



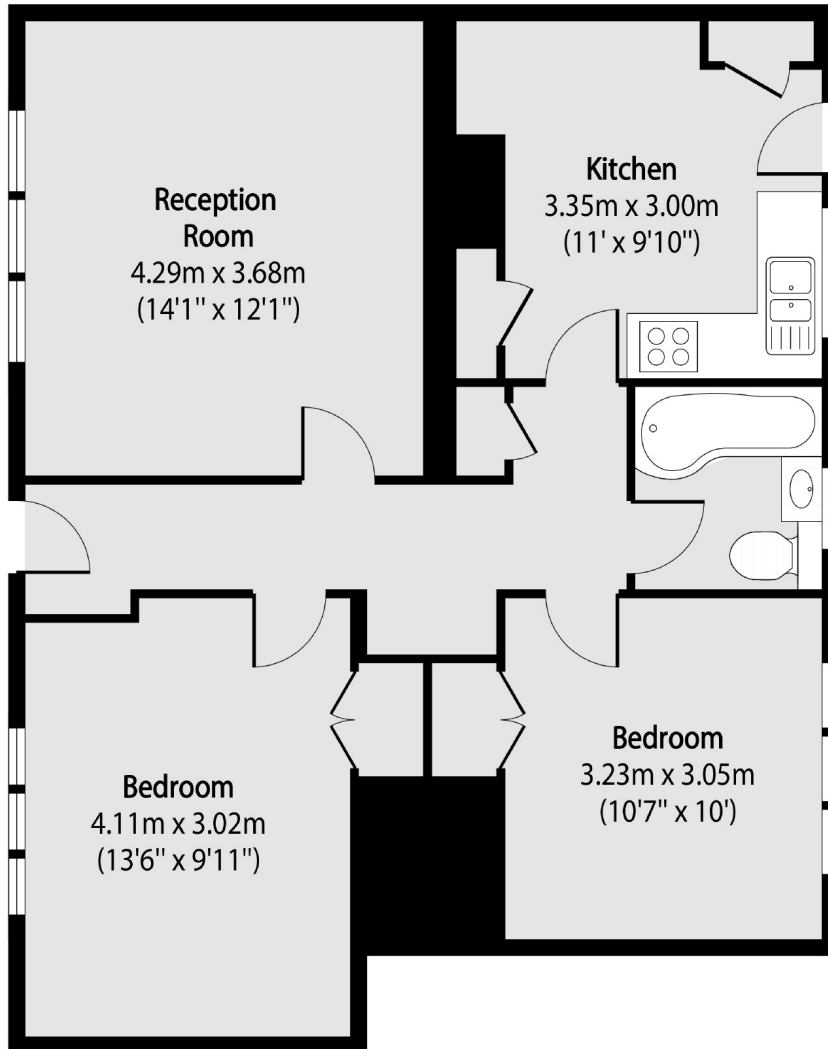
## Gifford Gardens, W7

£430,000

This two bedroom ground floor maisonette is immaculately presented throughout, with a long lease, direct access onto a large private garden, and an additional private front garden.

Ideally located just moments from the sought after Mayfield Primary School amongst other well regarded local schools, with easy access to Hanwell's Elizabeth Line less than a mile away. The much renowned 'Bunny Park' is a short stroll away, along with local bus links.

- Two Bedroom • Ground Floor • Maisonette •
- Private Garden • Long Lease • Separate Kitchen •



Total area (approx): 67.08 sq m (722 sq. ft)

Robertson Smith & Kempson Hanwell Sales  
69 Greenford Avenue,  
London, W7 1LL  
020 8566 2339  
[hanwellsales@robertsonsmithandkempson.co.uk](mailto:hanwellsales@robertsonsmithandkempson.co.uk)

Energy Rating: C. We aim to make our particulars both accurate and reliable. However they are not guaranteed; nor do they form part of an offer or contract. If you require clarification on any points then please contact us, especially if you're traveling some distance to view. Please note that appliances and heating systems have not been tested and therefore no warranties can be given as to their good working order.