



St. Marys Avenue Central, UB2

£795,000

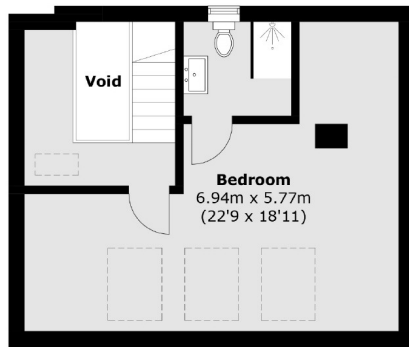
This detached family home has been extended to the rear and into the loft, allowing four bedrooms, two bathrooms and two receptions. The property has the additional benefit of off street parking for multiple cars.



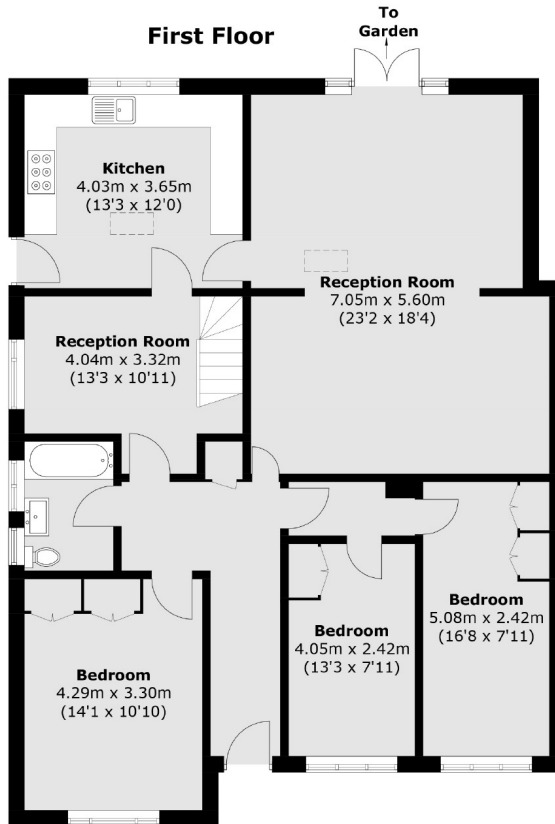
Ideally located within Norwood Green, with easy access to local primary schools, including the popular Khalsa Primary School. Nearby green spaces include Norword Green Park and Osterley Park. The property has easy access to the M4 for commuting in and out of London.

- Bungalow • Four Bedrooms • Two Bathrooms •
- Off-Street Parking • Detached • Two Receptions •





First Floor



Ground Floor

Total area (approx.): 159.1 sq. m (1,712.5 sq. ft)
(Excluding Void)

Robertson Smith & Kempson Hanwell Sales
69 Greenford Avenue,
London, W7 1LL
020 8566 2339
hanwellsales@robertsonsmithandkempson.co.uk

Energy Rating: C. We aim to make our particulars both accurate and reliable. However they are not guaranteed; nor do they form part of an offer or contract. If you require clarification on any points then please contact us, especially if you're traveling some distance to view. Please note that appliances and heating systems have not been tested and therefore no warranties can be given as to their good working order.