



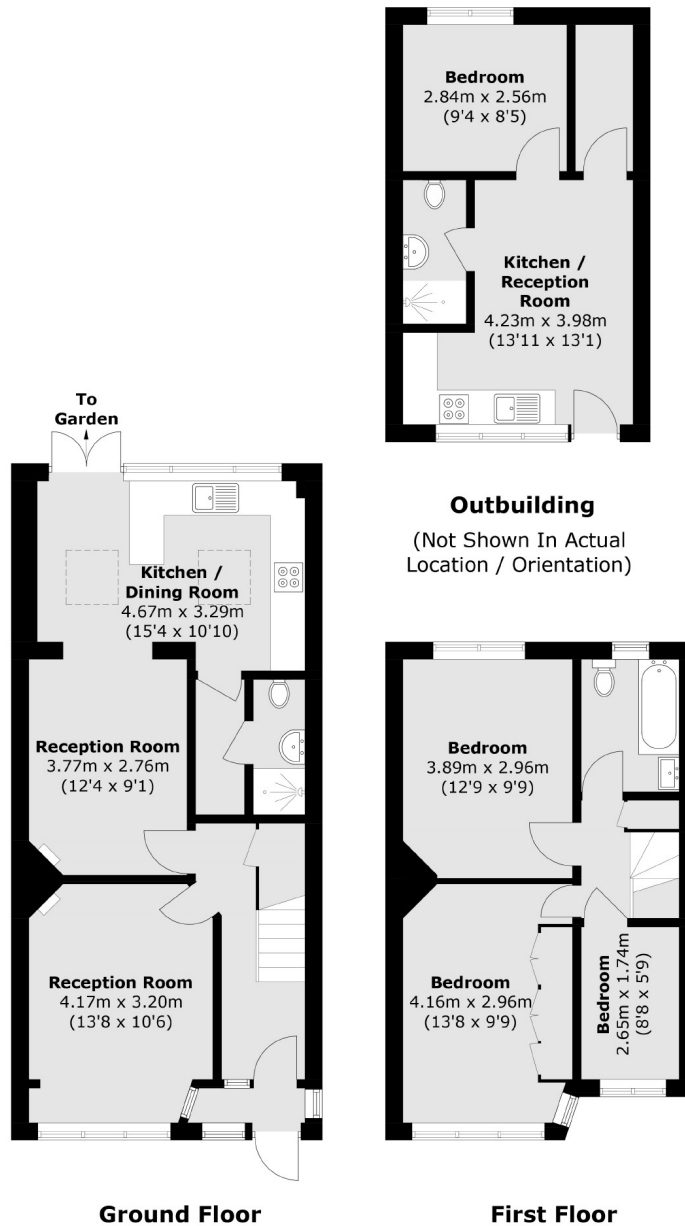
## Bridge Avenue, W7

£625,000

This three bedroom property is being offer to the market with no onward chain. The property has been extended to the rear with further potential to extend into the loft (STPP). The property has a west facing garden with the additional bonus of a brick built outhouse.

Ideally located just moments from the sought after Mayfield Primary School amongst other well regarded local schools, with easy access to Hanwell's Elizabeth Line and many bus links. The much renowned 'Bunny Park' is a short stroll away, perfect for young families.

- Three Bedrooms • Rear Extended • Chain Free •
- Outhouse • Freehold • West Facing Garden •



Total area (approx.): 90.9 sq. m (978.4 sq. ft)  
 Outbuilding (approx.): 27.9 sq. m (300.3 sq. ft)

Robertson Smith & Kempson Hanwell Sales  
 69 Greenford Avenue,  
 London, W7 1LL  
 020 8566 2339  
[hanwellsales@robertsonsmithandkempson.co.uk](mailto:hanwellsales@robertsonsmithandkempson.co.uk)

Energy Rating: B. We aim to make our particulars both accurate and reliable. However they are not guaranteed; nor do they form part of an offer or contract. If you require clarification on any points then please contact us, especially if you're traveling some distance to view. Please note that appliances and heating systems have not been tested and therefore no warranties can be given as to their good working order.