

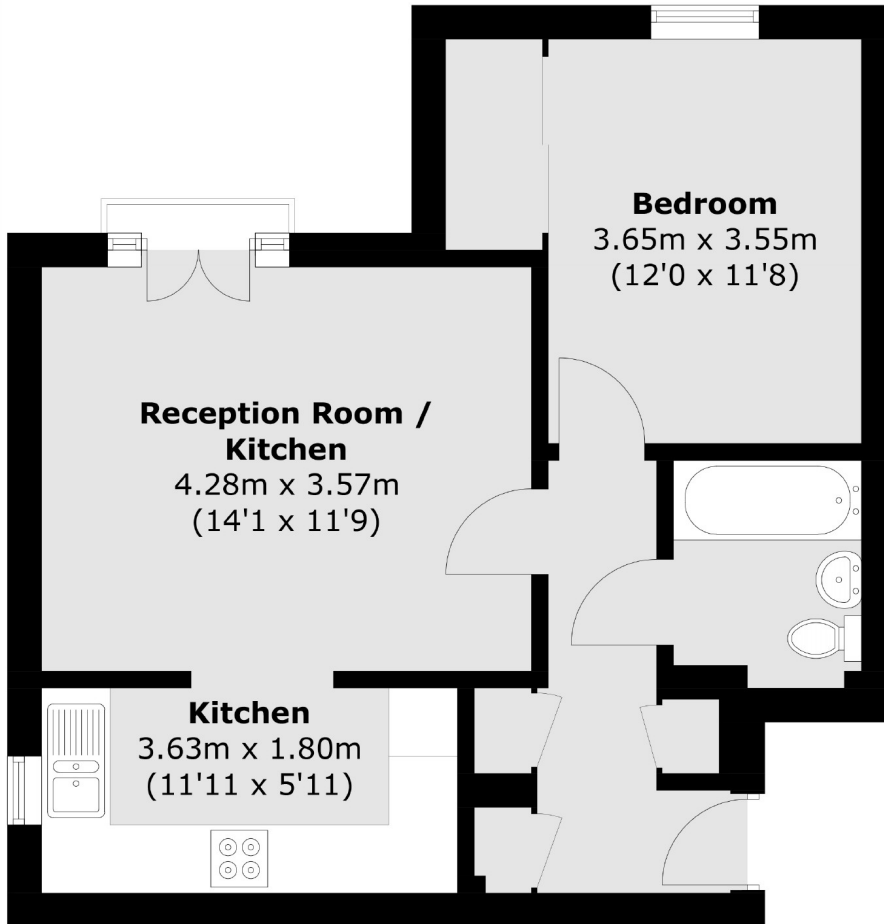


## Gilbert White Close, UB6

£290,000

**\*\*Offers In Excess Of\*\*** A one bedroom purpose-built flat with an allocated parking space situated in a quiet, cul-de-sac development. The reception Juliet balcony affords views of the surrounding green and peaceful nature reserve.

Located within a few minutes walk to Perivale station (Central line) and with easy access to motorways. A Tesco supermarket and local amenities are also close by.



## First Floor

Total area (approx.): 45.1 sq. m (485.4 sq. ft)

Robertson Smith & Kempson Hanwell Sales  
69 Greenford Avenue,  
London, W7 1LL  
020 8566 2339  
[hanwellsales@robertsonsmithandkempson.co.uk](mailto:hanwellsales@robertsonsmithandkempson.co.uk)

Energy Rating: C. We aim to make our particulars both accurate and reliable. However they are not guaranteed; nor do they form part of an offer or contract. If you require clarification on any points then please contact us, especially if you're traveling some distance to view. Please note that appliances and heating systems have not been tested and therefore no warranties can be given as to their good working order.