

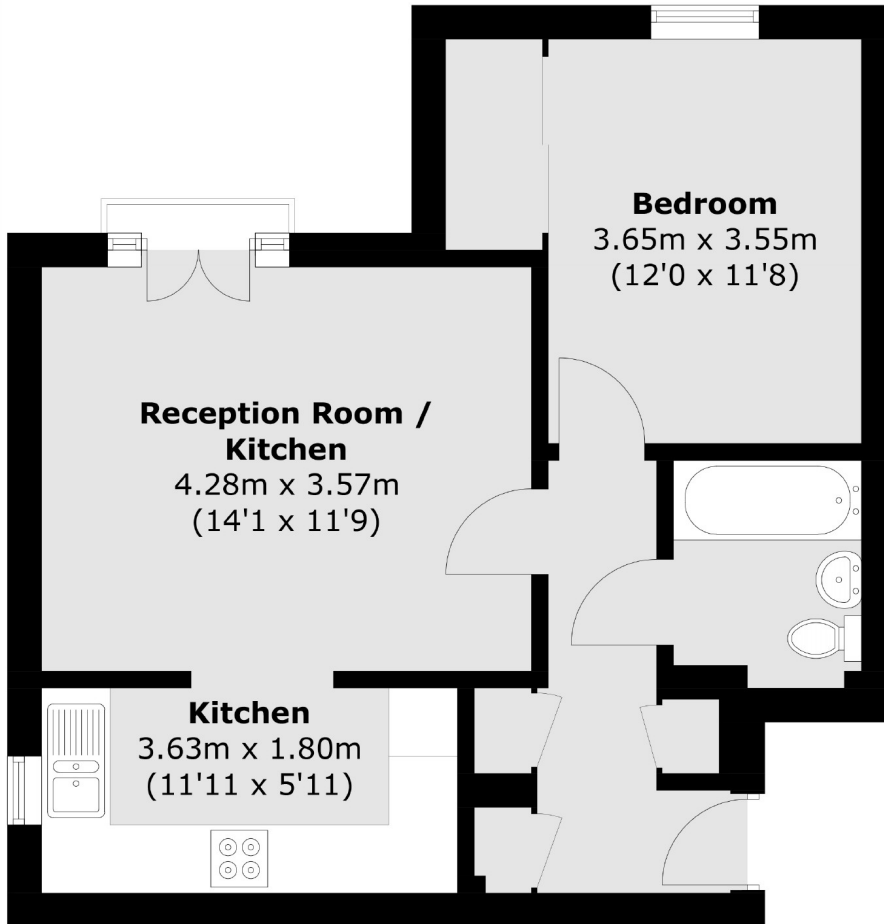


## Gilbert White Close, UB6

£299,950

**\*\*Offers In Excess Of\*\*** A one bedroom purpose-built flat situated in a quiet, cul-de-sac development. From the reception Juliet balcony, you can take in the views of the green and peaceful nature reserve. The flat also has an allocated parking space.

Located within only a few minutes walk to Perivale station (Central line) and easy access to the A40 and A406 for the motorist.



## First Floor

Total area (approx.): 45.1 sq. m (485.4 sq. ft)

Robertson Smith & Kempson Hanwell Sales  
69 Greenford Avenue,  
London, W7 1LL  
020 8566 2339  
[hanwellsales@robertsonsmithandkempson.co.uk](mailto:hanwellsales@robertsonsmithandkempson.co.uk)

Energy Rating: C. We aim to make our particulars both accurate and reliable. However they are not guaranteed; nor do they form part of an offer or contract. If you require clarification on any points then please contact us, especially if you're traveling some distance to view. Please note that appliances and heating systems have not been tested and therefore no warranties can be given as to their good working order.