

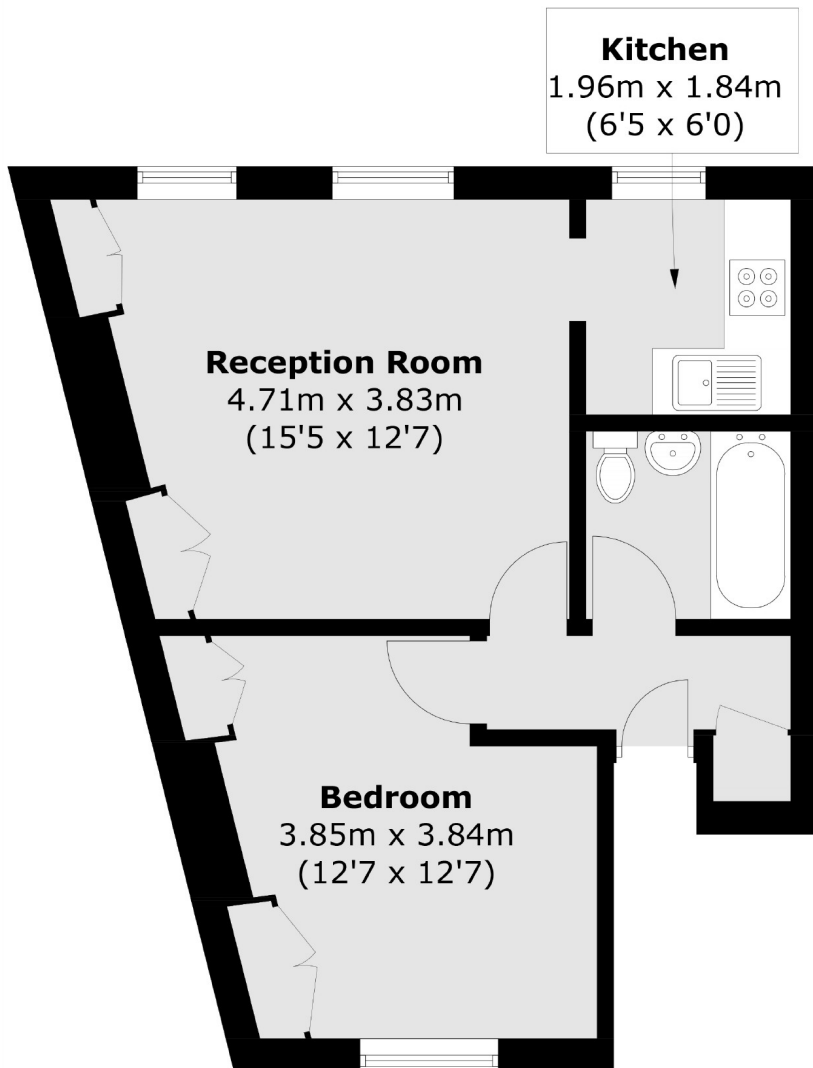


## Boston Road, W7

£270,000

A one bedroom top floor flat located in the vibrant heart of Hanwell. The property also has a demised loft space meaning it could be significantly extended to create a further two bedrooms and a bathroom, subject to the usual consents.

Ideally located for Hanwell (Elizabeth line) and Boston Manor (Piccadilly line) stations and moments from a range of local amenities including pubs, shops and restaurants.



## Second Floor

Total area (approx.): 39.4 sq. m (424.0 sq. ft)

Robertson Smith & Kempson Hanwell Sales  
69 Greenford Avenue,  
London, W7 1LL  
020 8566 2339  
[hanwellsales@robertsonsmithandkempson.co.uk](mailto:hanwellsales@robertsonsmithandkempson.co.uk)

Energy Rating: E. We aim to make our particulars both accurate and reliable. However they are not guaranteed; nor do they form part of an offer or contract. If you require clarification on any points then please contact us, especially if you're traveling some distance to view. Please note that appliances and heating systems have not been tested and therefore no warranties can be given as to their good working order.