



Boston Road, W7

£270,000

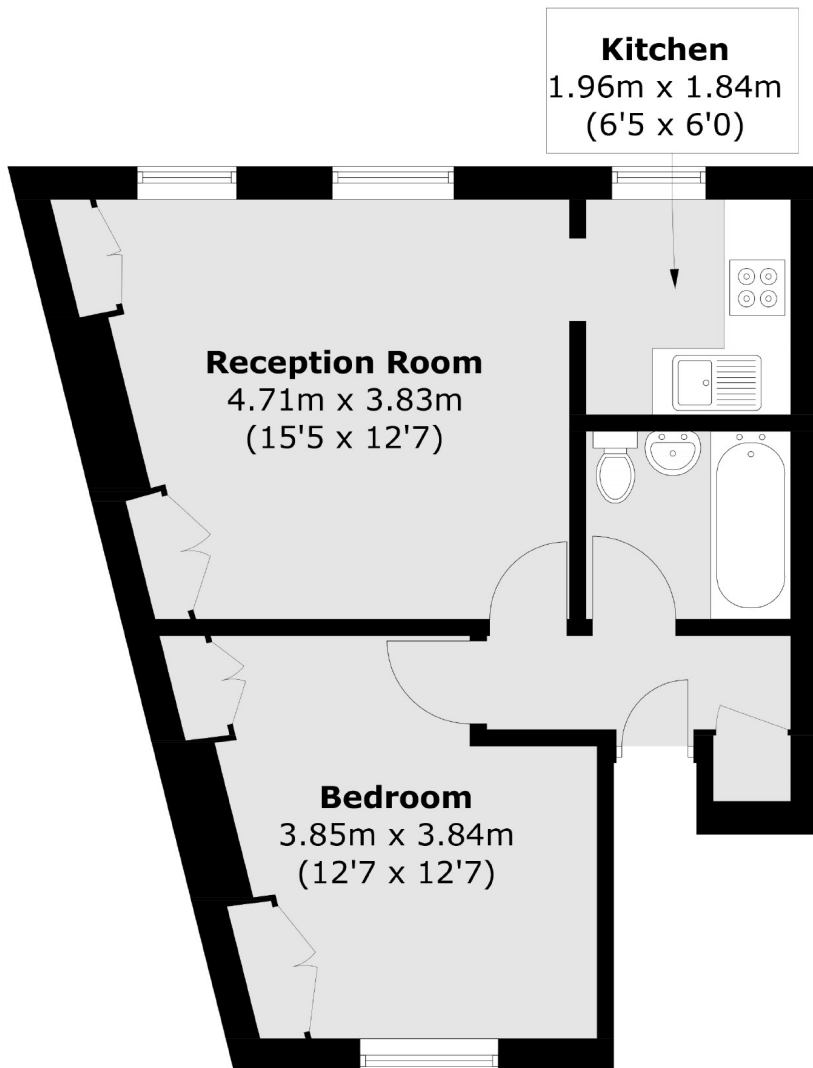
A one bedroom top floor flat located in the vibrant heart of Hanwell. The property also has a demised loft space meaning it could be significantly extended to create a further two bedrooms and a bathroom, subject to the respective permissions.



Ideally located for Hanwell Station (Elizabeth line) & Boston Manor Road (Piccadilly line). Suitably located for a range of local amenities on your doorstep such as pubs, shops and restaurants within moments.

- Potential To Extend • Loft Space • Semi Open Plan •
 - Close To Amenities • Period Building • Effective Double Glazing •
-





Second Floor

Total area (approx.): 39.4 sq. m (424.0 sq. ft)

Robertson Smith & Kempson Hanwell Sales
69 Greenford Avenue,
London, W7 1LL
020 8566 2339
hanwellsales@robertsonsmithandkempson.co.uk

Energy Rating: E. We aim to make our particulars both accurate and reliable. However they are not guaranteed; nor do they form part of an offer or contract. If you require clarification on any points then please contact us, especially if you're traveling some distance to view. Please note that appliances and heating systems have not been tested and therefore no warranties can be given as to their good working order.