



Greenford Avenue, W7

£450,000

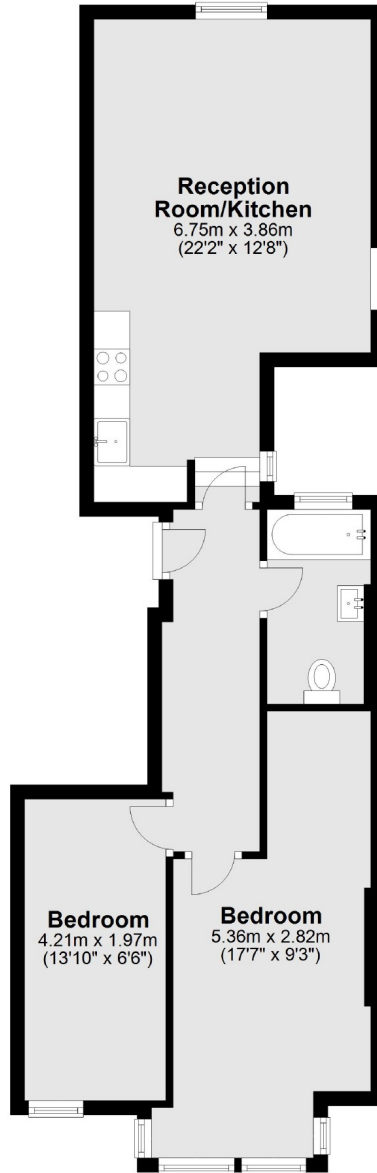
****Offers In Excess Of**** This two bedroom first floor apartment has been fully renovated throughout to the highest standard. The property will come with a private west facing garden and a new lease.



Ideally located only 0.1 miles from Hanwell's Elizabeth Line, just moments from all local shops and bus links into Ealing Broadway.

- Two Bedrooms • Share Of Freehold • Newly Renovated •
- Private Garden • Chain Free • Elizabeth Line •





Total area: approx. 56.5 sq. metres (608.5 sq. feet)

Robertson Smith & Kempson Hanwell Sales
69 Greenford Avenue,
London, W7 1LL
020 8566 2339
hanwellsales@robertsonsmithandkempson.co.uk

Energy Rating: D. We aim to make our particulars both accurate and reliable. However they are not guaranteed; nor do they form part of an offer or contract. If you require clarification on any points then please contact us, especially if you're traveling some distance to view. Please note that appliances and heating systems have not been tested and therefore no warranties can be given as to their good working order.