



Holman Drive, UB2

£499,950

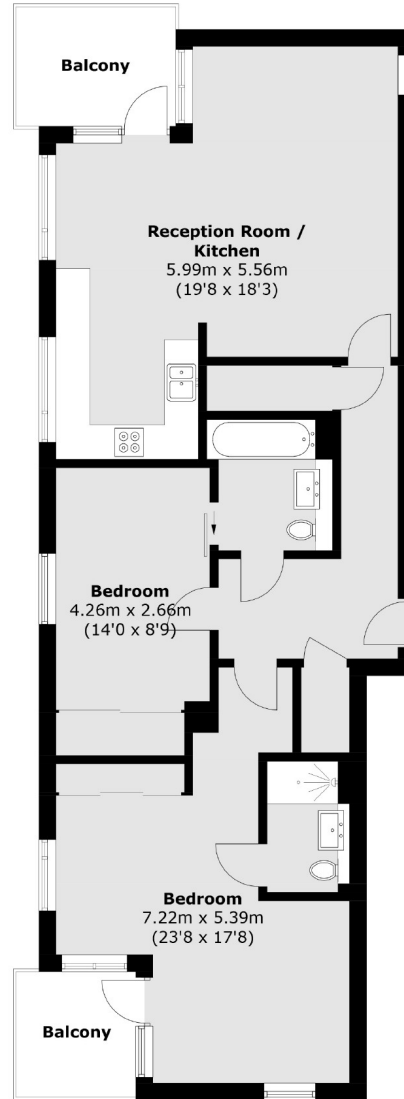
This two bedroom, two bathroom penthouse apartment is offered to the market with no onward chain. The property has two balconies, ideal for sunset and sunrise views, with the additional benefit of allocated underground parking.



Ideally located within a new build development, this property has easy access to Hanwell's Elizabeth Line, Boston Manor Piccadilly line, Brentford station 25 min to Waterloo station and short distance to Ealing Broadway. With further transport links and amenities just moments away on the Uxbridge Road.

- Two Bedrooms • Two Bathrooms • Two Balconies •
- Penthouse Apartment • Allocated Parking • Chain Free •





Total area (approx.): 95.3 sq. m (1,025.8 sq. ft)
Balcony area (approx.): 10.5 sq. m (113.0 sq. ft)

Robertson Smith & Kempson Hanwell Sales
69 Greenford Avenue,
London, W7 1LL
020 8566 2339
hanwellsales@robertsonsmithandkempson.co.uk

Energy Rating: B. We aim to make our particulars both accurate and reliable. However they are not guaranteed; nor do they form part of an offer or contract. If you require clarification on any points then please contact us, especially if you're traveling some distance to view. Please note that appliances and heating systems have not been tested and therefore no warranties can be given as to their good working order.