

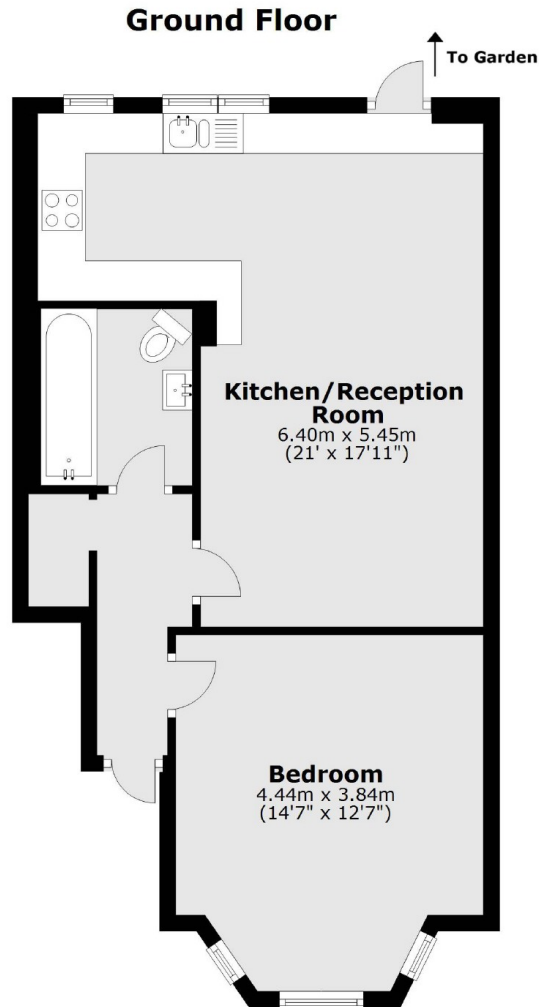


Greenford Avenue, W7

£375,000

****OFFERS IN EXCESS OF**** This period conversion one bedroom garden flat with open plan living accommodation is offered to the market with no onward chain. The property also has the added bonus of a private garden and a share of the freehold.

Conveniently located for excellent transport links, including Hanwell station which is moments away and frequent and varied bus routes. The 'Bunny Park is also within walking distance.



Total area: approx. 53.5 sq. metres (576.1 sq. feet)

Robertson Smith & Kempson Hanwell Sales
69 Greenford Avenue,
London, W7 1LL
020 8566 2339
hanwellsales@robertsonsmithandkempson.co.uk

Energy Rating: C. We aim to make our particulars both accurate and reliable. However they are not guaranteed; nor do they form part of an offer or contract. If you require clarification on any points then please contact us, especially if you're traveling some distance to view. Please note that appliances and heating systems have not been tested and therefore no warranties can be given as to their good working order.