



Greenford Avenue, W7

£399,950

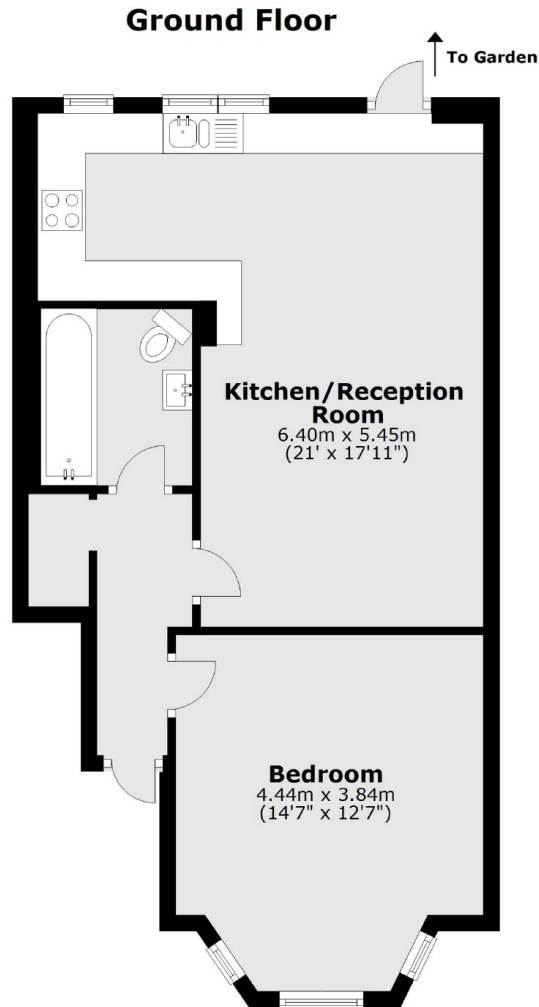
This period conversion one bedroom garden flat with open plan living accommodation is offered to the market with no onward chain. The property also has the added bonus of a private garden and share of freehold.



Conveniently located for excellent transport links, including Hanwell station which is only a couple minutes away, and frequent and varied bus routes. The 'Bunny Park, is also within walking distance.

- Ground Floor Flat • Share Of Freehold • Private Garden •
- Period Conversion • Chain Free • Excellent Transport Links •





Total area: approx. 53.5 sq. metres (576.1 sq. feet)

Robertson Smith & Kempson Hanwell Sales
69 Greenford Avenue,
London, W7 1LL
020 8566 2339
hanwellsales@robertsonsmithandkempson.co.uk

Energy Rating: C. We aim to make our particulars both accurate and reliable. However they are not guaranteed; nor do they form part of an offer or contract. If you require clarification on any points then please contact us, especially if you're traveling some distance to view. Please note that appliances and heating systems have not been tested and therefore no warranties can be given as to their good working order.