

Copley Close, W7

£380,000

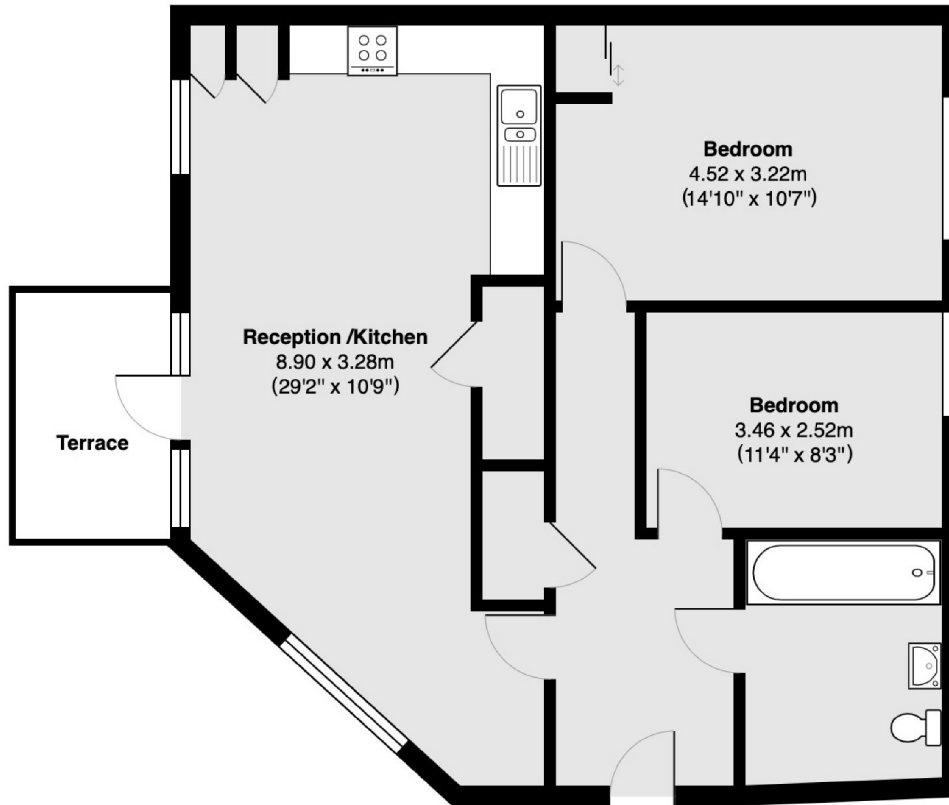
A two double bedroom ground floor apartment set within a new build development. Offered to the market with a long lease and no onward chain.



Situated with access to Castlebar Park train station, providing access to London Paddington within 30 minutes. It is also approximately a mile from both Hanwell and West Ealing Stations both on Crossrail link.

- Two Bedrooms • Ground Floor • Long Lease •
 - Private Terrace • New Build • Chain Free •
-





Total area 73.6 sq m (approx) (793 sq ft approx)

Terrace total area 5.2 sq m (approx) (56 sq ft approx)

Robertson Smith & Kempson Hanwell Sales
69 Greenford Avenue,
London, W7 1LL
020 8566 2339
hanwellsales@robertsonsmithandkempson.co.uk

Energy Rating: B. We aim to make our particulars both accurate and reliable. However they are not guaranteed; nor do they form part of an offer or contract. If you require clarification on any points then please contact us, especially if you're traveling some distance to view. Please note that appliances and heating systems have not been tested and therefore no warranties can be given as to their good working order.