



Holly Park Road, W7

£455 pw (1975 pcm)

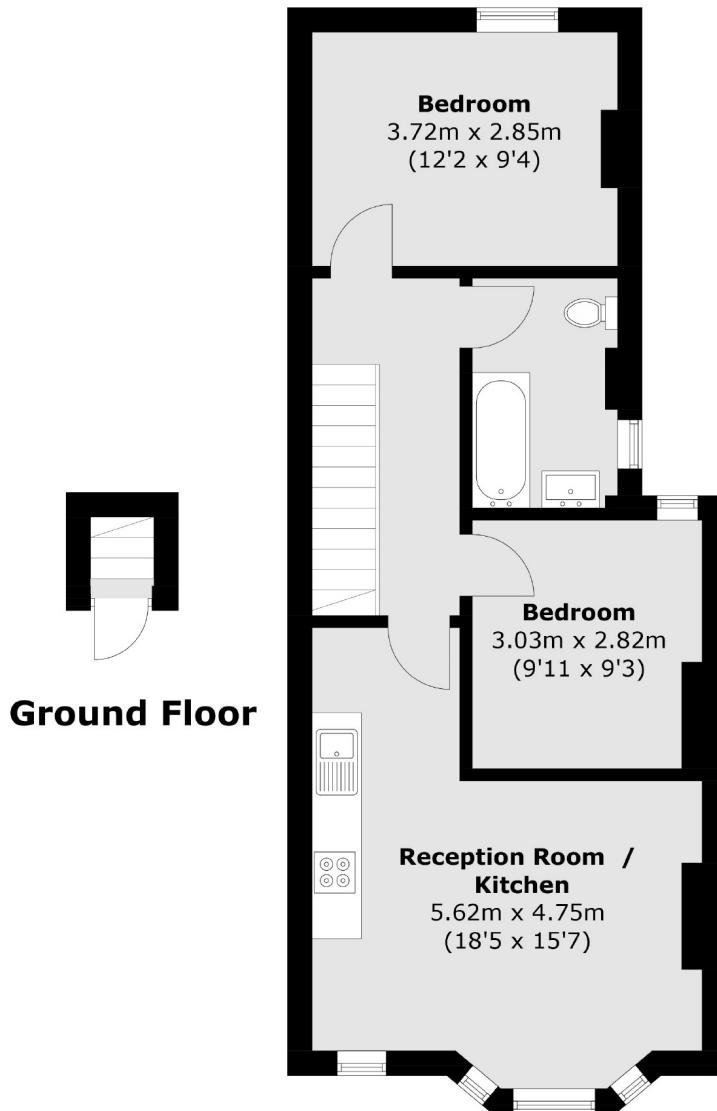
A two bedroom first floor conversion flat in excellent decorative order. There is a large open plan kitchen and living area with space for dining, two double bedrooms and a modern bathroom with shower.



Holly Park Road is a leafy residential street convenient for Hanwell Mainline Station, close by to the many transport links of the Uxbridge Road and to the green spaces of Bunny Park.

- Two Beds • Furnished • First Floor Conversion Flat •
 - Recently Refurbished • Hanwell Mainline •
-





Total area (approx.): 54.4 sq. m (585.5 sq. ft)

Robertson Smith & Kempson Northfields Lettings
116 Northfield Avenue, London,
W13 9RT
020 8280 2800
northfieldslettings@robertsonsmithandkempson.co.uk

Energy Rating: . We aim to make our particulars both accurate and reliable. However they are not guaranteed; nor do they form part of an offer or contract. If you require clarification on any points then please contact us, especially if you're traveling some distance to view. Please note that appliances and heating systems have not been tested and therefore no warranties can be given as to their good working order.