



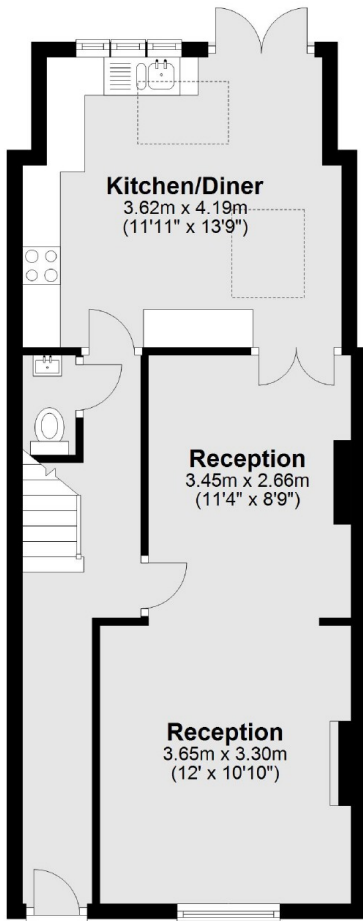
Enfield Road, TW8

£519 pw (£2,250 pcm)

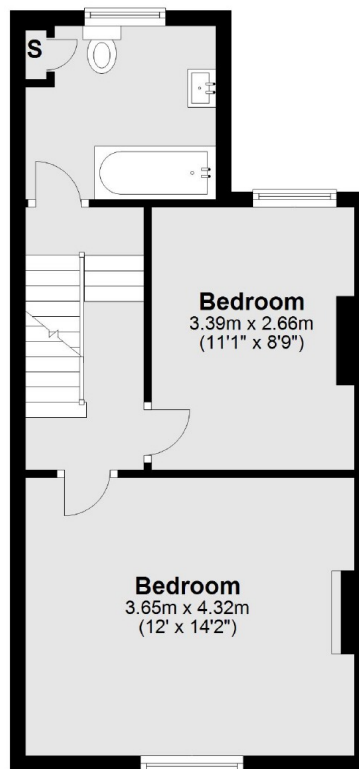
Stunning four bedroom family home with a double length reception room, large modern kitchen with space for dining, private garden, two bathrooms(one en-suite) and available furnished being ideal for a family relocating.

Enfield Road is a quiet residential street in an excellent location convenient for Northfields, South Ealing and Brentford Mainline station.

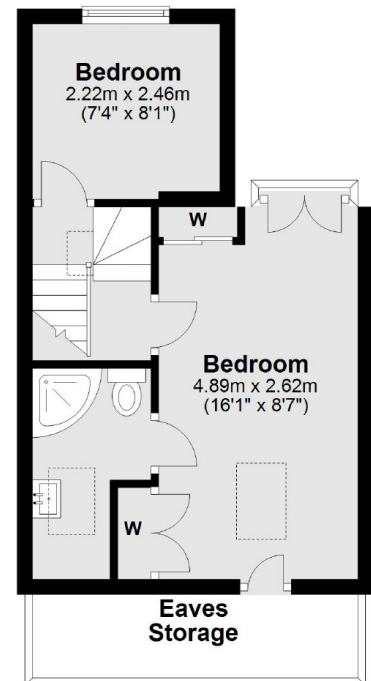
Ground Floor



First Floor



Second Floor



Total area: approx. 110.5 sq. metres (1189.5 sq. feet)

Robertson Smith & Kempson Northfields Lettings
116 Northfield Avenue, London,
W13 9RT
020 8280 2800
northfieldslettings@robertsonsmithandkempson.co.uk

Energy Rating: D. We aim to make our particulars both accurate and reliable. However they are not guaranteed; nor do they form part of an offer or contract. If you require clarification on any points then please contact us, especially if you're traveling some distance to view. Please note that appliances and heating systems have not been tested and therefore no warranties can be given as to their good working order.