

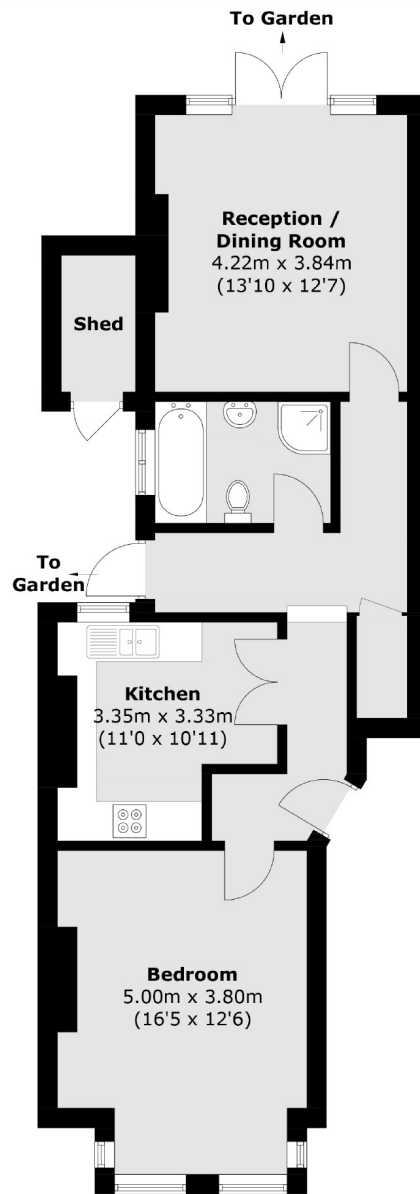


Melbourne Avenue, W13

£450,000

A large one double bedroom semi-detached ground floor flat with a secluded garden and allocated off-street parking. Additional benefits include a long lease and being offered to the market with no onward chain.

Ideally located for the Elizabeth line at West Ealing station which provides unrivalled access to Central London. Local parks to enjoy include Elthorne, Lammas & Walpole.



Approx Internal Area: 64.0 sq. m (688.9 sq. ft)
Shed: 2.5 sq. m (26.9 sq. ft)
Total: 66.5 sq. m (715.8 sq. ft)

Robertson Smith & Kempson Northfields Sales
116 Northfield Avenue,
London, W13 9RT
020 8566 2340
northfieldssales@robertsonsmithandkempson.co.uk

Energy Rating: E. We aim to make our particulars both accurate and reliable. However they are not guaranteed; nor do they form part of an offer or contract. If you require clarification on any points then please contact us, especially if you're traveling some distance to view. Please note that appliances and heating systems have not been tested and therefore no warranties can be given as to their good working order.