



Lyncroft Gardens, W13

£675,000

A substantial four bedroom split level home, attractively offered to the market with no onward chain and with a share of freehold upon completion.

Offering over 1,400 sq ft, this bright and spacious Edwardian flat must be viewed to be truly appreciated. The property features four double bedrooms, a separate living room, a generous kitchen/breakfast room and a family bathroom.

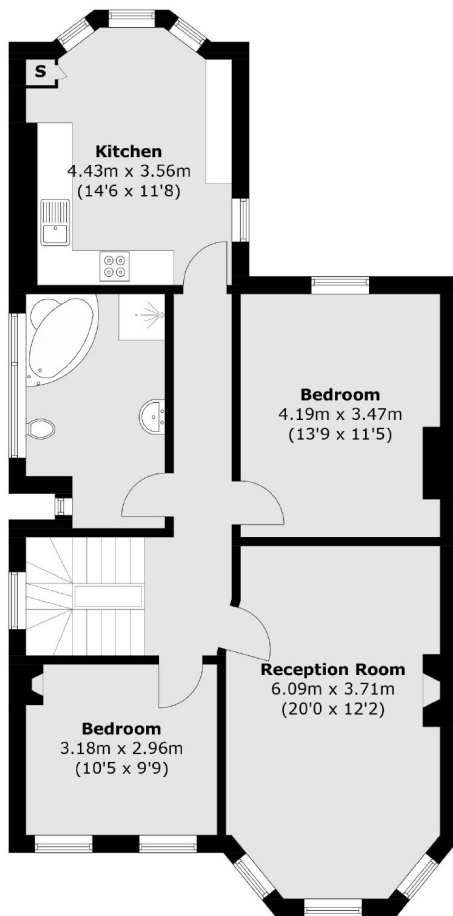


Benefitting from an abundance of period features and character throughout, this four bedroom split level flat is a true gem. The first floor comprises a spacious reception room, family bathroom, master bedroom, a further double bedroom and a kitchen/diner. The loft offers two additional double bedrooms. This is a truly unique property with a great deal of potential.

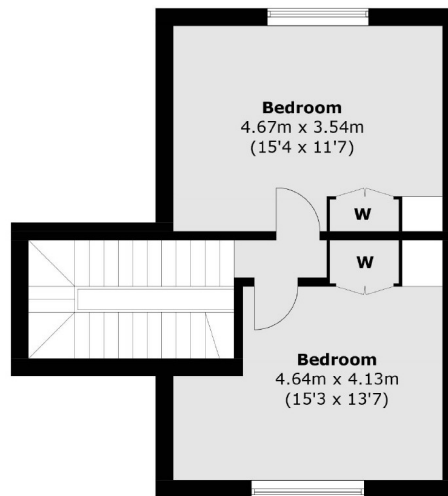
Ideally located for West Ealing & Ealing Broadway stations (Elizabeth Line) and also Northfields & South Ealing stations (Piccadilly). Local parks to enjoy including Lammas & Walpole. Well regarded schools locally to choose from.

- Split-Level Flat • Four Bedrooms • Bathroom •
 - Separate Living Room • No Onward Chain • Share of Freehold •
-

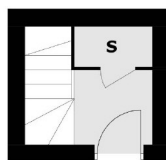




First Floor



Second Floor



Ground Floor

Total area (approx.): 130.6 sq. m (1,405.8 sq. ft)

Robertson Smith & Kempson Northfields Sales
116 Northfield Avenue,
London, W13 9RT
020 8566 2340
northfieldssales@robertsonsmithandkempson.co.uk

Energy Rating: E. We aim to make our particulars both accurate and reliable. However they are not guaranteed; nor do they form part of an offer or contract. If you require clarification on any points then please contact us, especially if you're traveling some distance to view. Please note that appliances and heating systems have not been tested and therefore no warranties can be given as to their good working order.