



Midhurst Road, W13

£1,100,000

A simply delightful five bedroom family home set over three floors with an enviable west facing garden, attractively offered onto the market with no onward chain.

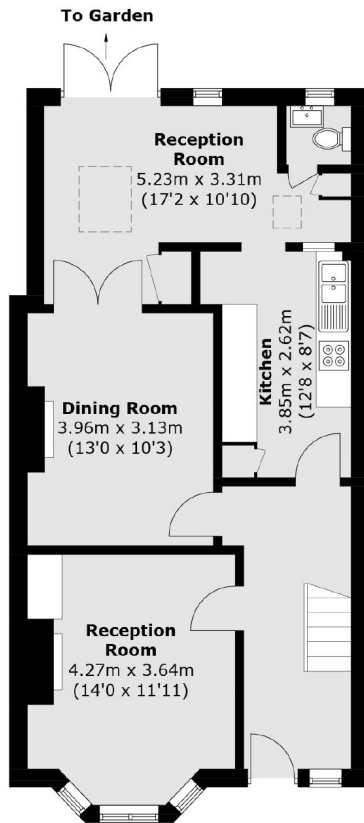


The ground floor comprises a front reception room, WC, and an extended kitchen/diner that opens onto the secluded garden. The first floor offers three bedrooms and a family bathroom, while the loft has been tastefully converted to include two double bedrooms and a shower room.

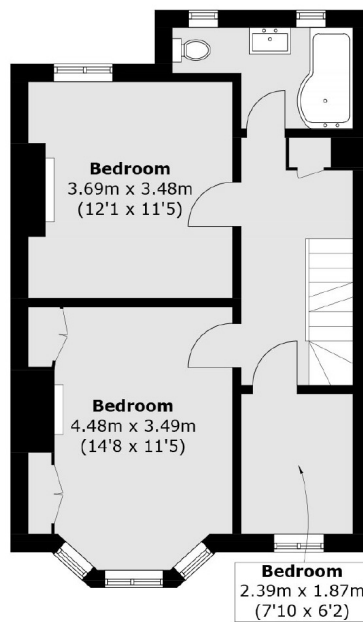
Ideally located for excellent schools including the Ofsted outstanding Fielding primary and Elthorne High. Plenty of local parks to enjoy including Lammas, Walpole & Elthorne. Access all over London is made very easy with both the Elizabeth line (West Ealing) and Northfields station (Piccadilly) within walking distance.

- No Onward Chain • West-Facing Garden • Ofsted Outstanding Schools •
 - Ideal Transport Links • Local Parks • Five Bedrooms •
-

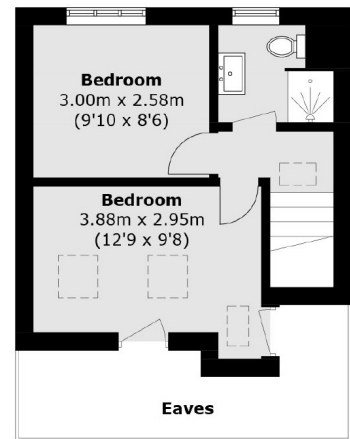




Ground Floor



First Floor



Second Floor

Total area (approx.): 135.8 sq. m (1461.7 sq. ft)
(Excluding Eaves)

Robertson Smith & Kempson Northfields Sales
116 Northfield Avenue,
London, W13 9RT
020 8566 2340
northfieldssales@robertsonsmithandkempson.co.uk

Energy Rating: . We aim to make our particulars both accurate and reliable. However they are not guaranteed; nor do they form part of an offer or contract. If you require clarification on any points then please contact us, especially if you're traveling some distance to view. Please note that appliances and heating systems have not been tested and therefore no warranties can be given as to their good working order.