



## **Holland Gardens, TW8**

**£450,000**

A modern two double bedroom apartment with two bathrooms (one ensuite), residents gym, and allocated underground parking. The property is set within a gated development and is offered with no onward chain.

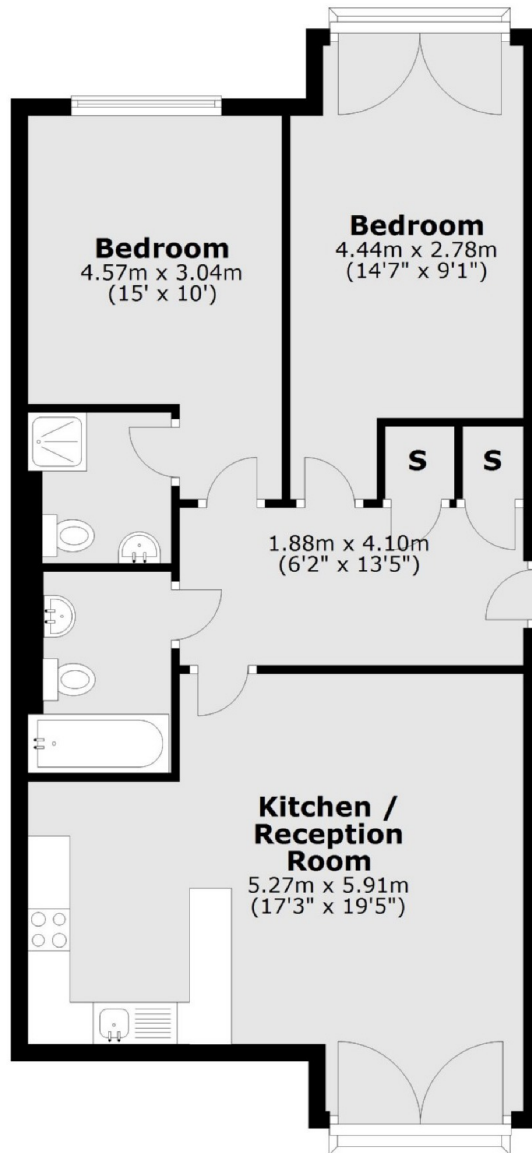


Holland Gardens is a private road located close to Brentford High Street, with easy access to a range of bus routes and local attractions such as the Musical Museum and the London Museum of Water & Steam. The nearest station is Kew Bridge.

- Two Double Bedrooms • Two Bathrooms • Underground Parking •
- Chain Free • Concierge • Gym •



## Fifth Floor



Total area: approx. 69.3 sq. metres (745.4 sq. feet)

Robertson Smith & Kempson Northfields Sales  
116 Northfield Avenue,  
London, W13 9RT  
020 8566 2340  
[northfieldssales@robertsonsmithandkempson.co.uk](mailto:northfieldssales@robertsonsmithandkempson.co.uk)

Energy Rating: C. We aim to make our particulars both accurate and reliable. However they are not guaranteed; nor do they form part of an offer or contract. If you require clarification on any points then please contact us, especially if you're traveling some distance to view. Please note that appliances and heating systems have not been tested and therefore no warranties can be given as to their good working order.