



South Road, W5

£625,000

A spacious, light and airy two double bedroom end of terrace family home presented in excellent condition by the current owners, enjoying a large secluded garden.

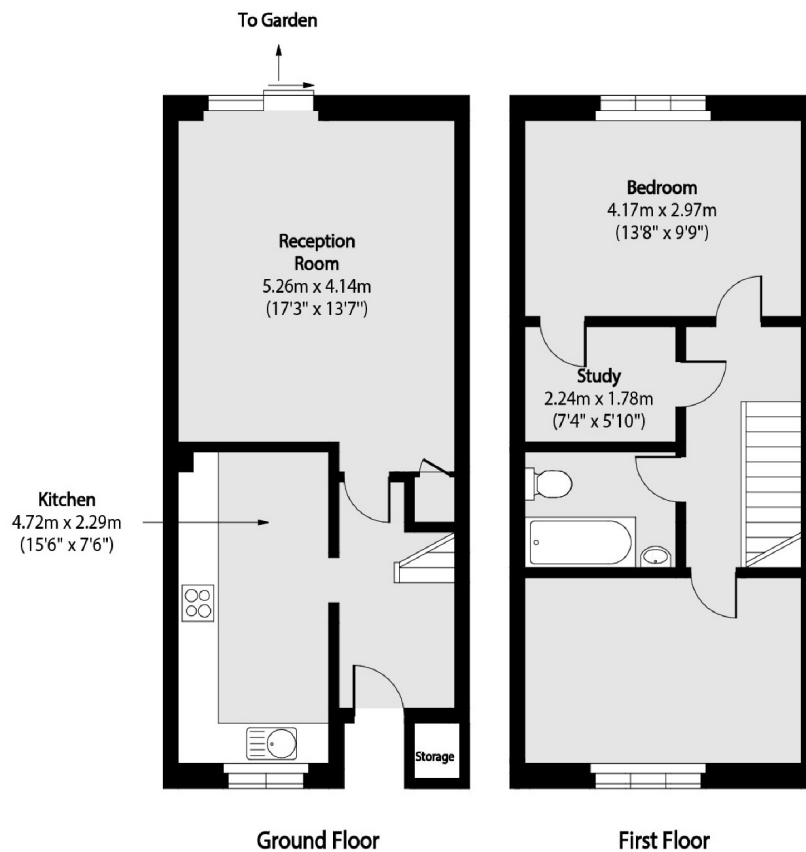


The ground floor accommodation comprises kitchen and a generous living/dining room which leads directly to the sun trapped garden. The first floor offers two double bedrooms, family bathroom and ideal office/study.

Ideally located for excellent bus links, a choice of stations including South Ealing & Northfields (Piccadilly) and Brentford. Gunnersbury Park is a fantastic family amenity. Within South Road, a lovely playground for all the local kids to enjoy.

- End Of Terrace • Two Double Bedrooms • Secluded Garden •
- South Ealing (Piccadilly) • Gunnersbury Park • Excellent Condition •





Total area (approx): 80.45 sq m (866 sq. ft)
(Excluding External Storage Outside)

Robertson Smith & Kempson Northfields Sales
116 Northfield Avenue,
London, W13 9RT
020 8566 2340
northfieldssales@robertsonsmithandkempson.co.uk

Energy Rating: C. We aim to make our particulars both accurate and reliable. However they are not guaranteed; nor do they form part of an offer or contract. If you require clarification on any points then please contact us, especially if you're traveling some distance to view. Please note that appliances and heating systems have not been tested and therefore no warranties can be given as to their good working order.