



**Hessel Road, W13**

**£950,000**

What a gem! An absolutely stunning three double bedroom family home set over three floors with a large secluded south-facing garden. Refurbished to the highest standard throughout, this truly is a turn-key property for the new owner.





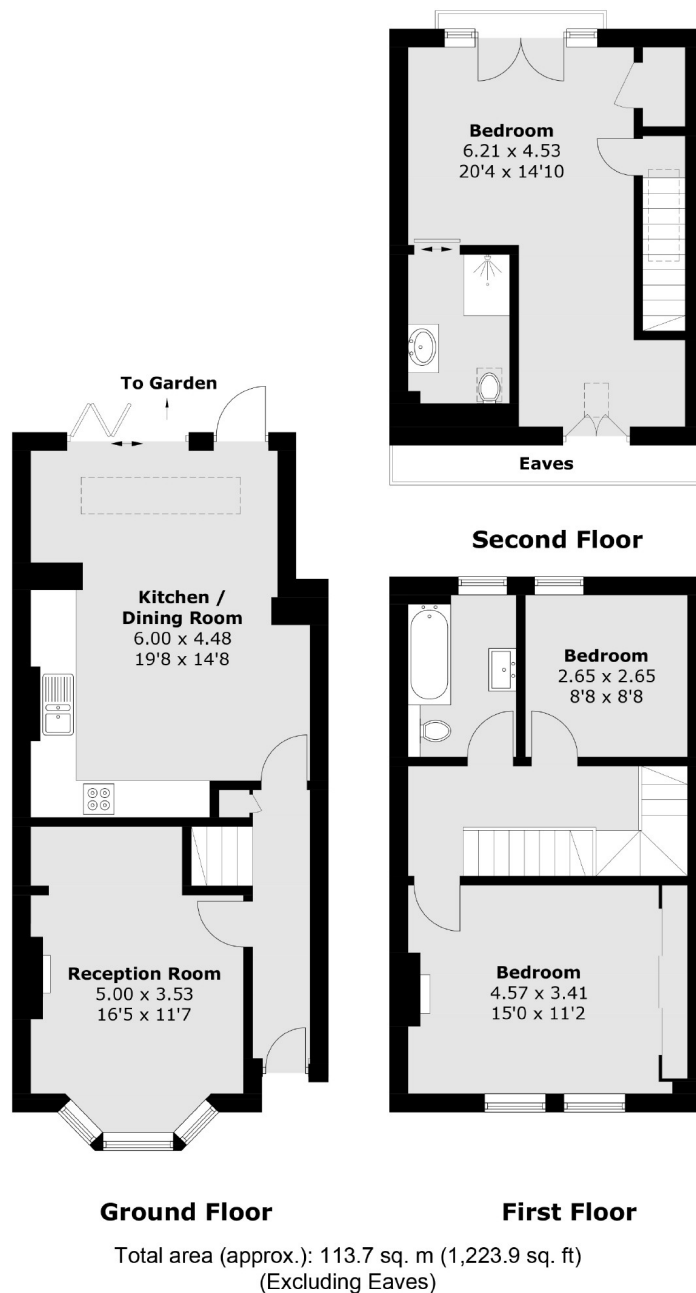
Meticulously refurbished throughout, this stunning family home is filled with period features, character and lots of natural light. The ground floor offers a large front reception room and a most impressive extended kitchen/diner leading the landscaped south-facing garden. The first floor comprises a double bedroom to the front of the house, additional double bedroom/office and a luxurious family bathroom. The loft has been amazingly converted to include the principle bedroom which benefits from a Juliet balcony overlooking the southerly aspect and an en-suite shower-room.

Ideally located for a range of Ofsted outstanding schools including Oaklands, Fielding & Elthorne. Local parks to enjoy include Lammas, Walpole & Elthorne. A range of shops & restaurants along Northfields Avenue. A choice of excellent transport links, Elizabeth Line (West Ealing) & Northfields station (Piccadilly) providing easy access all over London.

- South-Facing Garden • Stunning Condition • Ofsted Outstanding Schools •
  - Local Parks • Excellent Transport Links • Three Double Bedrooms •
-







Robertson Smith & Kempson Northfields Sales  
116 Northfield Avenue,  
London, W13 9RT  
020 8566 2340  
[northfieldssales@robertsonsmithandkempson.co.uk](mailto:northfieldssales@robertsonsmithandkempson.co.uk)

Energy Rating: . We aim to make our particulars both accurate and reliable. However they are not guaranteed; nor do they form part of an offer or contract. If you require clarification on any points then please contact us, especially if you're traveling some distance to view. Please note that appliances and heating systems have not been tested and therefore no warranties can be given as to their good working order.